

# How to Easily Harmonize the Damaging Effects of Electromagnetic Frequencies & Radiation

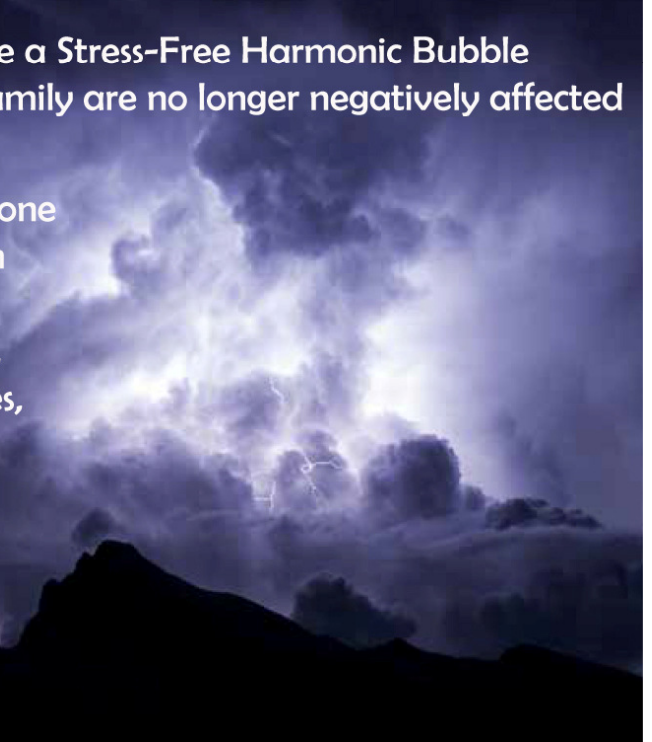


**By ZaKaiRan**

Simple and Effective ways to Create a Stress-Free Harmonic Bubble of Blissful Energy, so that you and your family are no longer negatively affected

by the damaging effects of 5G, Mobile Phone and other EM Frequencies & Radiation from

Electricity, Mobile Phones, Cell Phones, Tablets, Laptops, Computers, Appliances, TVs, Smart Meters, Transformers, High-Tension Powerlines, TV/Radio/Mobile/Cell Phone Towers, Leylines, Hartman Lines, Vortexes, Radon, Underground Water and even Nuclear Radiation.



# ***Contents***

**Everything is Energy & Vibration**

**What are Electromagnetic Fields and Radiation?**

**The Electromagnetic Spectrum**

**The Effect on the Human Body of Exposure to EMR & EMF**

**The Microwave Frequency**

**Mobile Phone Studies**

**How Dangerous are Mobile Phones?**

**Below Ground Geopathic Stress: Underground Water, Ley lines & Vortexes**

**Above Ground Geopathic Stress: High-tension power lines, Step-down Transformers, Mobile Phone**

**Dowsing or Scientific Instruments?**

**How do I find out the Level of Radiation or Geopathic Stress that I have in my House or Environment?**

**So why do EM field and radiation affect us in a negative way? And what is the Solution?**

***The Solution! Tesla's Innovative Technologies!***

**Photons and Tachyon Energy...**

**The Connection to Tesla's Products - How do Tesla's Innovative Technologies work?**

**Product Testing:** Kirlian Diagnostic Photography, Acutec Ryodoraku Tests, Aura Photography

**Tesla's Harmonizing Products - What Tesla's Products Should I Buy?**

**Basic Overview of Tesla's Products to create your Harmonic Bubble!**

**Personal Harmonizing Pendants - HOW TO CHOOSE A PENDANT**

**Phone Harmonizing Tags, Tablet/Laptop Harmonizing Tags**

**Pocket Plate aka "Mini Travel" Plate**

**Small Octagonal Plate aka the Computer Plate**

***Creating a Harmonic Bubble***

**The Car Travel Plate**

**14-Sided & 8-Sided House Plate, 5G Small & Large Oyster Plate**

**Electron Stabilizer**

**Electric & Hybrid Car Kit Special - 10% OFF!**

**The Water Kit & Small Portable Water Kit**

**House Kit - 15%-20% discount!**

**The Spiritual Practitioner Range**

# ***How to Easily Harmonize the Damaging Effects of Electromagnetic Frequencies & Radiation***

***Simple and Effective ways to Create a Stress-Free Harmonic Bubble of Blissful Energy, so that you and your family are no longer negatively affected by the Damaging Effects of EM Frequencies & Radiation***

from Electricity, Mobile Phones, Cell Phones, Tablets, Laptops, Computers, Appliances, TVs, Smart Meters, etc. As well as above ground and underground Geopathic Stress from Electrical Transformers, High-Tension Powerlines, TV/Radio/Mobile/Cell Phone Towers, Leylines, Hartman Lines, Vortexes, Radon, Underground Water and even Nuclear Radiation.

***by ZaKaiRan©***

***With additional information from***



©

Hi, my name is ZaKaiRan, and I have been working extensively in the health, healing, nutrition, spirituality and success fields for over 30 years. And through my extensive education, I became aware of the damaging effects of Electromagnetic Frequencies and Radiation and other energies and frequencies, such as Geopathic Stress, that are negatively affecting our bodies.

Every single day, our bodies are bombarded by a list of chaotic energies that affect us in negative ways. Everyone is aware of the lethal effects of ionizing, aka nuclear radiation, but most people are unaware of the many other damaging frequencies that we are affected by, such as the electromagnetic frequencies from electricity, computers, as well as microwave mobile phone radiation, just to name a few.

These energy frequencies are very subtle in nature, and most people lack the sensitivity to feel these energies. Although, sensitive people do feel their effects, and often to extreme degrees, and we call this EM Hypersensitivity.

Most people are not educated about these damaging frequencies, because corporations and governments have a financial interest in maintaining ignorance amongst the masses. And because of that, the scientific study of Electromagnetic Frequencies and Radiation, is not extensively financially supported and are still considered to be a “fringe” science and “alternative” health.

Especially because the negative effects of these frequencies are not immediately apparent, and you need very sensitive instrumentation to scientifically quantify these energies. As well as the fact that most of their affects are cumulative, so it is often difficult to determine the origin of disease in relation to EM Frequencies and Radiation, especially with minimal scientific study.





## ***Everything is Energy & Vibration***

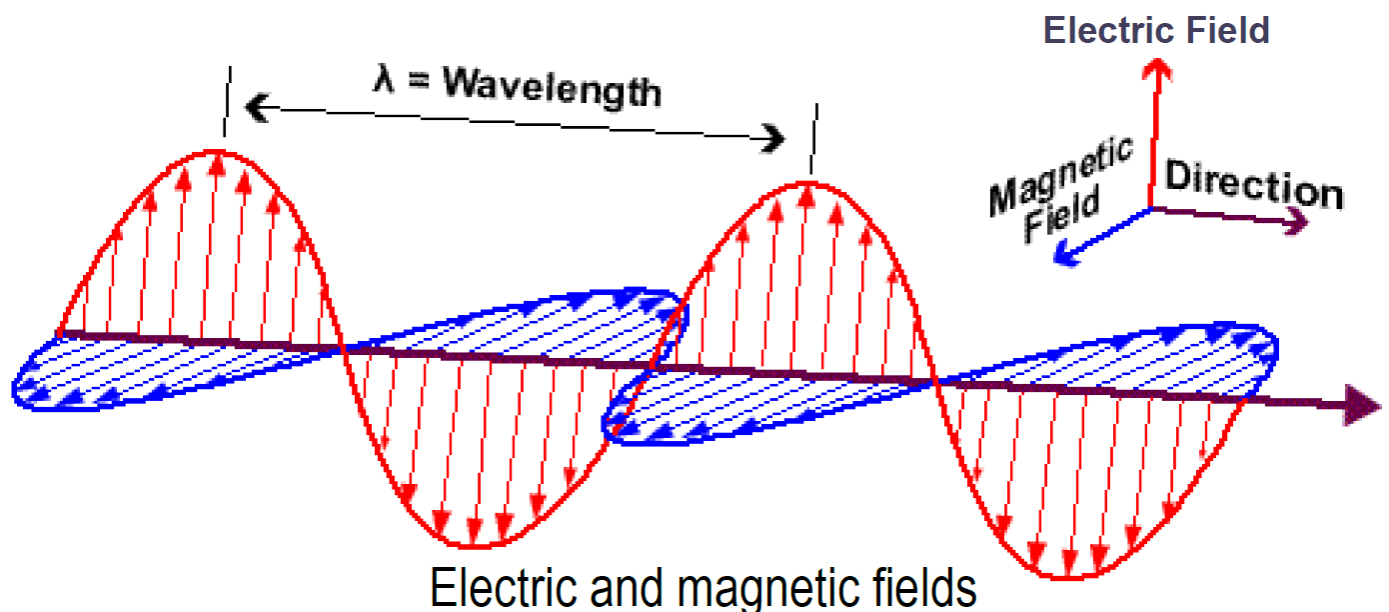
Everything in the world of creation, is essentially energy in motion. Even though it appears that most things are solid and static, that is an illusion, because everything is vibrating at different frequencies. It just depends on how fast those objects or energies are vibrating, which is what makes certain frequencies damaging to our bodies, because they are vibrating so fast, they can penetrate our bodies.

For instance, our bodies operate on an Electromagnetic frequency of about 7.9 millivolts (or one thousandth of a volt). Whereas common electricity today, operates at 110-220 volts, which is why getting shocked doesn't feel good and can kill you.

So, the frequency and the voltage of electricity, or the pressure of that frequency, is considerably stronger and faster than the Electromagnetic Frequency of our bodies.

---

## ***What are Electromagnetic Fields and Radiation?***





Electric power is created by the push and pull of tiny, non-visible particles which have electric charges. These charged particles occur throughout nature in all atoms and therefore in all matter.

If they have a negative charge, these particles are called 'electrons'. If they have a positive charge they are called 'protons'. Scientists discovered that charged atoms, called 'ions', contain potential energy and have called this energy 'volts'. An electrical generator separates ions into positive and negative groups then combines them via an electrical (copper) wire.

When the two groups mingle, the movement of opposite charges seeking each other produces electrical current along the wire (this current is measured in amps). The flow of electricity along the wire can be likened to the flow of water surging through a garden hose. The voltage is the pressure, and the current is the flow. Voltage multiplied by current equals power which is measured in watts.

Whenever an appliance is switched on or electric current flows through a wire, both electric and magnetic fields emanate, called electromagnetic fields (EMF). These fields radiate out at right angles from either the electrical wire or appliance, as shown below.

An electric field surrounds each charged particle all the time. A magnetic field occurs whenever electricity is on the move. Every time an appliance is on, current is running through the appliance and therefore the magnetic field is strong. Magnetic fields are measured in milligauss (mG).

It is known that the electrical fields stop just below the surface of our skin, but the magnetic fields pass through the human body.

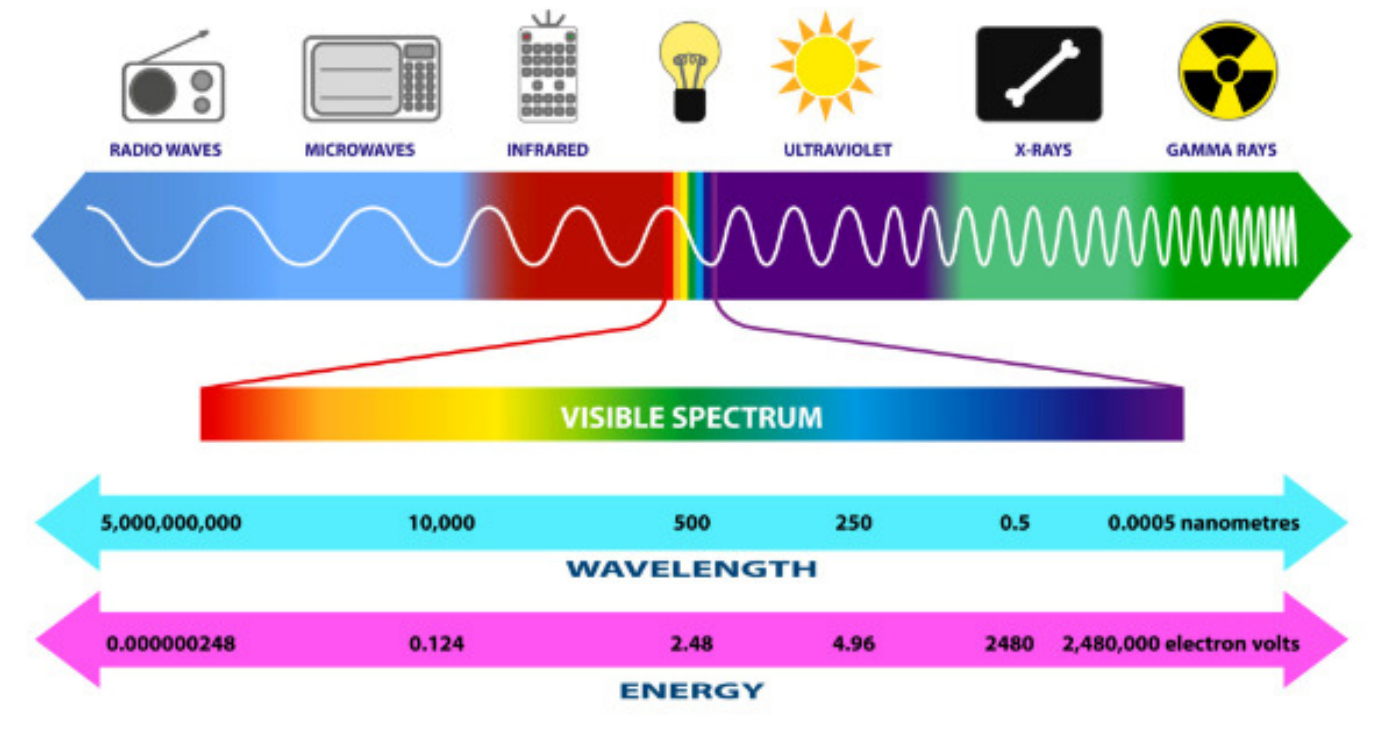
Magnetic fields form continuous loops in one direction until they fade away. Magnetic fields penetrate concrete, brick and human beings, even our cell walls. This disrupts our fine electrical system.

A membrane is wrapped around the cell and regulates many of the cell's functions, allowing in materials (minerals, hormones etc) and messages. Experts theorise that the electrical currents, which EMFs produce in the body, subtly disrupt the delicate chemical balances of the cell membrane. Some European studies have shown that EMF exposure can affect the signals going in and out of cells.

The strength of the EMF depends on the amount of current being carried (amps - A) and voltage (volt - V). EMFs are classified according to their frequency. Hertz (Hz) refers to the number of times the current alternates back and forth in one second (frequency).

Electrical power in Australia is generated at 50 cycles per second (50 Hz). Common sources of high EMFs in buildings are transformers, switchboards, 3 phase electrical cables, motors, and appliances. The fields from mobile phone chargers or refrigerator motors can reach a metre, but the field from a sub-station may radiate significantly high fields over several metres.

# ELECTROMAGNETIC SPECTRUM



## *The Electromagnetic Spectrum*

All energy moves in waves, and the frequency of these waves, or their motion up and down, and the space between waves, is measured in Hertz. 1 Hertz is equal to one cycle of a wave per second. Radio waves and microwaves operate in the Electromagnetic spectrum of 3000 cycles per second to 300-billion cycles per second. Mobile phones operate in the 800-900 million cycles per second spectrum.

So, you can see that these frequencies are very fast and so small that they can penetrate practically anything, especially your very conductive body.

All Electromagnetic Frequencies and Radiation from High-Tension Powerlines, Step-Down Transformers, electrical wiring, appliances, TVs, computers, mobile phones, cell phones, 5G & 4G microwave/mobile phone transmitters, TV and radio transmitters, etc., can create a whole list of physical disorders, including cancer, leukaemia, birth defects, blood disorders, etc.

And depending on how strong these frequencies are and how much and how often you are exposed to these frequencies, will be the degree that your body's immune system and your cells are adversely affected.

And when we get even higher into the EM spectrum, we get into the infrared spectrum, the visible light spectrum, and ultraviolet spectrum. All of which are healthy aspects of life in proper quantities but damaging from overexposure.

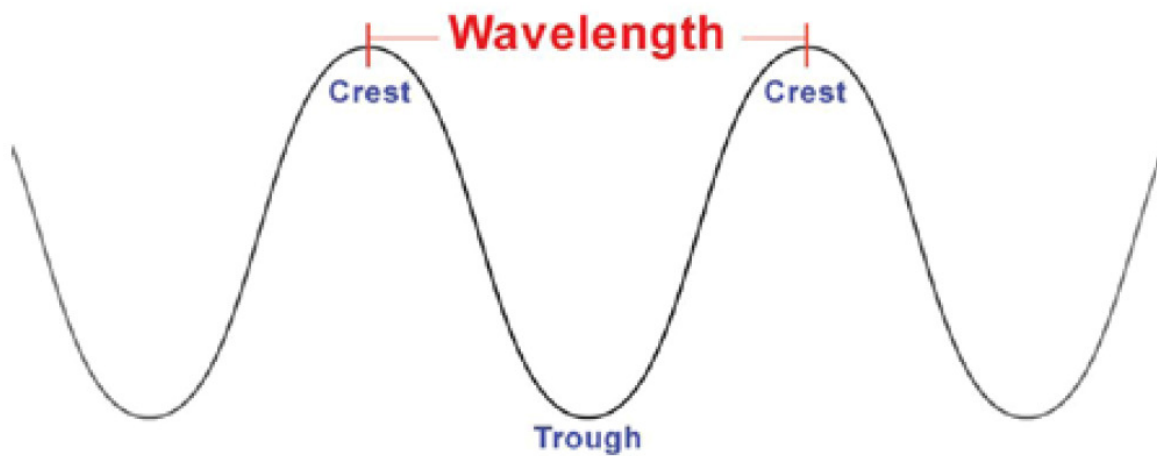
And as we go higher up into the Trillions of Hertz spectrum, we get into soft X-rays, which are used by the medical and dental community. These soft X-rays, are a very useful frequency and technology to diagnose disease and broken bones, etc. But too many X-rays can cause long term cumulative damage to cells.

And as we go even higher up into the Trillions of Hertz spectrum, we enter the realm of nuclear fallout which contains hard X-rays and Gamma rays, which as we all know causes massive cell mutation and death. Or, in the case of Bruce Banner, “Hulkitus”.



Mobile Phone/Microwave Antenna

The electromagnetic spectrum is a continuum of all electromagnetic waves arranged according to frequency and wavelength. The sun, earth, and other bodies radiate electromagnetic energy. of varying wavelengths. Electromagnetic energy passes through space at the speed of light in the form of sinusoidal waves. The wavelength is the distance from wave-crest to wave-crest (see figure below).



Measuring the length of a wave

Light is a particular type of electromagnetic radiation that can be seen and sensed by the human eye, but this energy exists within the wider range of wavelengths. The micron is the basic unit for measuring the wavelength of electromagnetic waves.

The spectrum of waves is divided into sections based on wavelength. The shortest waves are gamma rays, which have wavelengths of  $10e-6$  (meaning to the power of ten) microns or less. The longest waves are radio waves, which have wavelengths of many kilometres. In the visible portion of the spectrum, the range is narrow, only consisting of microns from 0.4 (red) to 0.7 (blue).



# ***The Effect on the Human Body of Exposure to EMR & EMF***

Humanity is bathed in EMR (Electro-Magnetic Radiation) and EMFs (Electro-Magnetic Fields). We evolved with these EMRs and EMFs. Radiation is a natural part of the universe, but we have added our own manmade EMRs and EMFs to the mixture such as: TV and radio waves; microwaves; radar; alternating current, etc.

To recap, an EMF is “produced by accelerating electric charges” (6). So, anything that has an electrical foundation creates an EMF. This includes living organisms, such as you and me (creating natural EMFs), and man-made electrical objects (creating artificial EMFs). EMFs radiate from all electrical appliances in the home, office, factory, in cars, trucks and buses, and also from overhead tram and train lines.

EMR “consists of waves of the electromagnetic field, which propagate through space and carry electromagnetic radiant energy” (7), this includes infra-red, visible light, ultraviolet, x-rays, and gamma rays. Remember EMR can come from living and inanimate natural things including humans, trees and rocks (8), as well as man-made objects such as power lines, TV, cars and mobile phones. It is whether it is natural or artificial that makes a difference to how we are affected.

## **The electromagnetic spectrum is divided into two main sections:**

**1. Ionizing (lethal) radiation** consisting of very short wavelengths, like hard X-Rays and Gamma Rays; these have enough power to knock electrons off their orbit. These wavelengths have the ability to do permanent damage at the cellular level very quickly, causing cancers and genetic mutations.

**2. Non-ionizing (non-lethal) radiation**, emitted from Powerlines, Radios, TVs, Mobile phones, Microwave ovens, Ultra-violet, Radar and other sources. These consist of longer wavelengths that have less power, and have mistakenly been assumed to be harmless, even though they have the ability to heat tissue. Microwaves, visible light, and infrared wavelengths will all do this.

We have encircled the earth and infused the earth's atmosphere with these non-ionizing frequencies in ways that do not exist in nature. We use unnatural strengths, Alternating Current, Digital signals, all sorts of odd frequencies, without any understanding of the full biological effects on both the earth and its inhabitants.

It has been known for decades that the human body is a perfect antenna for FM and AM radio frequencies; our bodies reach peak absorption when we get into the Ultra-High Frequency (UHF) ranges, which is where TV and mobile phone transmissions occur.

The recommended standards in Australia and the U.S.A. for these frequency emissions are based on the thermal effect (the frequencies' ability to heat tissue), the same way a microwave oven cooks food. Decades of research have found alarming effects such as cancers, immune suppression, and birth defects, just to mention a few.

There are a variety of Gauss, EMF and Radio Frequency meters available on the market to measure the latent EMFs present around your electrical equipment.

To help assess the readings, here is some basic information:

1. The human body operates on electromagnetic energy of about 7.9 millivolts (mV).

2. The common voltage of the electricity used in Australia is 240V.

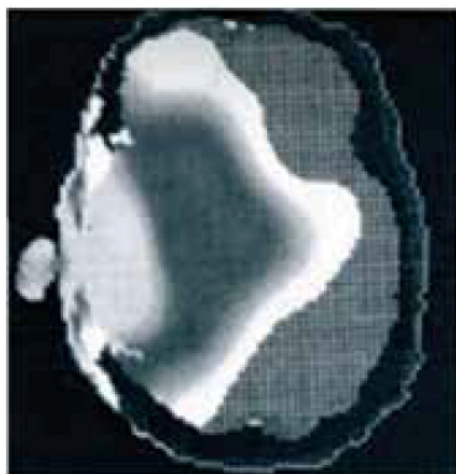
3. The allowable output of EMFs from electrical equipment measured in milligauss (mG), at a distance of 30 centimetres from the equipment, as determined by different countries of the world is:

**Russia** 1.5mG

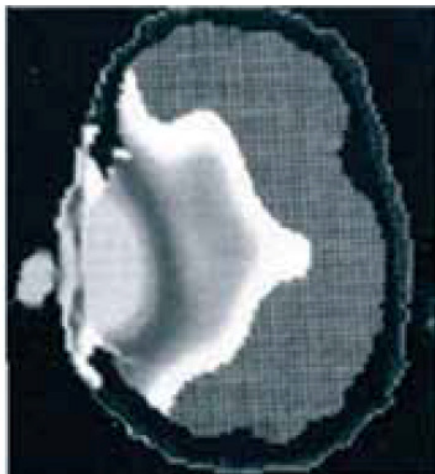
**Sweden** 2.5mG

**Australia** 1000-5000mG

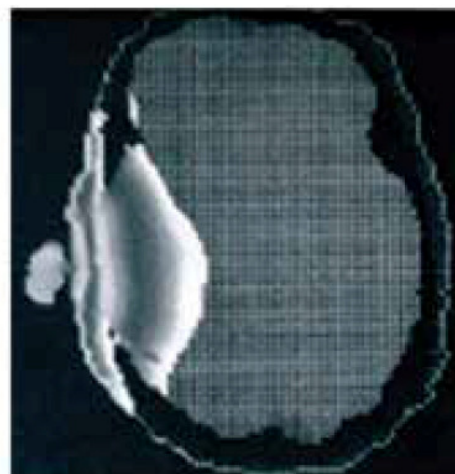
---



5-year old



10-year old



Adult

## ***The Microwave Frequency***

Now it should not be too difficult to imagine that an energy frequency that is used to cook food in microwave cookers, probably isn't too healthy for your body. Yet most people tend to adopt a nonchalant ignorant approach to life in-regards-to the possible negative effects of mobile phones, and the countless other energies that our bodies are bombarded with daily, with the perspective that, "if I can't see it or feel it, and the government says it's safe, then it must be safe".

Yet, I'm sure we would all agree that nuclear radiation will definitely kill you fairly quickly, depending on the amount of exposure you had, even though none of us can see or feel nuclear radiation. You also can't see air either, yet everyone agrees that it exists and is necessary for life.

## ***Mobile Phone Studies***

In 1995, mobile phone sales in North America exceeded the birth rate.

According to Bank My Cell, in 2021 there were 7.1 billion mobile phones worldwide, 6.37 billion of those were smartphones. They are ubiquitous. You and anyone else within range of the microwaves emitted by a mobile phone are affected.

We have yet to count the costs of the miniature radio transmitters that are transforming Nikola Tesla's invention into possibilities for portable personal pollution. Entire nations are reaching for pocket communicators. According to Globe Newswire, in 2022, the mobile phone industry was worth USD484.81 billion and was expected to increase to USD792.51 billion within seven years.

Exquisitely sensitive to subtle electromagnetic frequencies, human brains and bodies depend on tiny electrical impulses to conduct complex life processes including the ability to read, recall and respond to words.

Acting as antennas, our bodies easily tune into signals from radio and microwave transmissions. Blake Levitt, author of *Electromagnetic Fields*, says, "When it comes to mobile phones, a worse frequency could not have been chosen for the human anatomy."

As researcher Carolanne Patton notes, "The brain reaches peak absorption in the UHF bands, right where cellular (mobile phone) telecommunications operate."

British military scientists have discovered that mobile phone transmissions disrupt the brain sites for memory and learning, causing forgetfulness and sudden confusion. Other studies in both Europe and England show signals from mobile phones reduce the ability to concentrate, calculate, and coordinate complicated activities such as driving a car.

Startled by a \$4 billion a year increase in claims among drivers after using mobile a phone, North American insurers found that simply juggling mobile phones is not the cause of a 600% increase in accidents. Instead of being a dangerous distraction, tests conducted by the U.S. Department of Energy found, "Using a mobile phone impairs memory and reaction times." These statements were made before 4G was fully integrated.

According to a University of Toronto report, "The heightened probability of crashing your car persists for up to 15-minutes after completing a call."

Dr. Chris Rumball, chairman of the B.C. Medical Association's emergency medical services committee claims, "This is comparable to driving while dead drunk." This is one of the reasons there are such heavy fines for driving while talking on a mobile phone.

'Hands-free' mobile speakerphones cause even more crashes because they typically emit 10-times more brainwave interference than handheld units, due to the metal surround of cars.

In New Zealand (due to the work of the late Dr Neil Cherry) mobile phone towers are prohibited on school property because of possible health effects. But in Canada, England, and Australia regulations ignore the hidden hazards of mobile phone towers.

Mobile phones send pulsed signals through the skull in a process one expert likens to jackhammers on the brain. Safety Codes look only at microwaves burning the skin. "Basically, Health Canada claims if it can't cook you, it can't hurt you," says Walter McGinnis. "It's like saying cigarettes aren't dangerous unless they burn you."

Micro-cell spokesman Colin McCrae claims, "Emissions from mobile phone towers carry about the same energy as a 50-watt light bulb, well within safe guidelines".

The World Health Organisation (WHO) told us thalidomide, asbestos and blood transfusions were safe. Strangely, the addiction to mobile phones is similar to the prestigious allure of smoking in the 60s and 70s.

Could immense profitability be the reason the mobile phone industry steadfastly denies all risks or responsibility?

Reporting the conclusions of a British study team, scientist Sir William Stewart told London's Financial Times, "Children may be more vulnerable because of their developing nervous system, the greater absorption of energy in the tissues of the head and a longer lifetime of exposure."

Roger Coghill became a long-standing advocate for health warnings to be affixed to mobile phones after he found that mobile-phone transmissions damage the ability of white blood cells.



to ward off infectious disease by disrupting the immune system's electromagnetic communications.

Dr. Neil Cherry (Lincoln University in Christchurch, NZ) has measured accelerated ageing, increased cell death, and cancers caused by radio frequency microwaves from mobile phones and their relay towers. With the brain's electro-chemical communications repeatedly zapped by lightning-like phone pulses, this Ph.D. biophysicist warns that headaches, fatigue, lethargy, nausea, dizziness, depression, arteriosclerosis and even Alzheimer's, can result from frequent or prolonged calls on mobile phones.

"There is also a higher incidence of cardiac problems," Dr Cherry comments, "in terms of the timing function in hearts. It has now been shown in many studies, that mobile phone users get more heart attacks and more heart disease."

He has also found that mobile phones can alter moods by causing tiny imbalances in trace minerals and hormones resulting in depression, suicide, anger, rage, and violence when calcium and serotonin levels are disrupted by mobile phone transmissions.

George Carlo (public health scientist) was hired by the Cellular Telecommunications Industry Association to condone mobile phones, but he found that rare tumors on the outside of the brain have more than doubled among mobile phone callers particularly on the right side of the head where phones are usually held.

Carlo told ABC's '20/20', "Mobile phones cause genetic damage leading to cancer." Warning of the potential for a global health disaster, ABC recommended 'prudent avoidance' of mobile phones after finding that every mobile phone they lab-tested exceeded the US Federal Communication Commission's standards for EMF absorption rates. EMF researcher Dave Ashton cautioned '20/20' viewers that, "Because mobile phones constantly search for the nearest repeating tower, long-term damage comes from mobile phones in the stand-by mode."

Dr. Carlo later told London's Express newspaper "Mobile phones cause genetic damage following a dose-response curve.

That is, the more a person uses a mobile phone, the more cellular destruction and health risks they incur. Mobile-phone-confused cells can go crazy. Experiments on captive animals show that this cumulative DNA damage is passed on to succeeding generations."

Dr Michael Repacholi (retired head of Australian Radiation Laboratories and head/coordinator at WHO for Radiation and Environmental Health Protection of the Human Environment) was in charge of an Adelaide Hospital study which confirmed Dr Carlo's conclusions after finding B-cell lymphomas doubled in mice within 18 months of a one-hour daily exposure to power densities experienced by a mobile phone users.

B-cell lymphomas are implicated in 85% of all cancers.

Mobile phone companies insist that the new digital phones operating at 1/50th the power of older analogue models are safer, but there is nothing "safe" about the new 1.9 gigahertz broadcasting frequency. Rapid pulsing microwave/radio mobile phone signals is much like a boxer taking repeated blows to the head, which can cause permanent brain damage.

A study by Dr. Peter French of Sydney, Australia, "Cells are permanently damaged by mobile phone frequencies and inherited unchanged, from generation to generation." This cellular damage, Dr French noted, is maximized at low dosage.

Attempting to explain a 25% increase in asthma and a 5% increase in asthma-related deaths throughout metropolitan Sydney, Dr French found “the production of histamine, which triggers bronchial spasms, is nearly doubled after exposure to mobile phone transmissions. Mobile phones also reduce the effectiveness of anti-asthmatic drugs, and retard recovery from illness”.

*Reference: “Cell phones: Invisible Hazards in the Wireless Age”,  
by Dr. George Carlo and Martin Schram (2001, Carroll and Graf publishers)*

---

## **HOW DANGEROUS ARE MOBILE PHONES?**

“The risk is extremely high,” declares Dr. Cherry. “There are 6 epidemiological studies showing that electromagnetic radiation across the spectrum increase brain tumors in human populations. Two of those studies are for particular brain tumors from mobile phones.”

Dr Cherry says, “Because cancer takes decades to develop, it will be another 10 or 20 years before ‘mobiles’ manifest a big bonanza in brain tumors. We’re already seeing acute effects that are noticed within minutes of using a mobile phone.”

Professor Leif Salford informed the Daily Mail that after a two-minute conversation on a mobile phone: “It seems that molecules such as proteins and toxins can pass out of the blood, while the phone is switched on and enter the brain. We need to bear in mind diseases such as MS and Alzheimer’s which are linked to proteins being found in the brain.”

“The mobile phone frequencies are the same as those used in radar and your microwave oven,” says Florida mobile phone tower opponent, Joe Chwick. “You wouldn’t think of sticking your head in a microwave oven, but there is no hesitation to putting the mobile phone to your ear.”

Having somehow survived three million years of evolution without mobile phones, many of us claim we cannot live without them, but can exquisitely sensitive electromagnetic beings live with mobile phones and the mobile phone towers the signals ride on?

Would ‘hanging up’ on such an intrusive and hazardous addiction be so terrible?

The information for this section is courtesy of:  
“The Tao of Detox” by Daniel Reid, Healing Arts Press  
Publishing 1 edition (October 25, 2006)  
Paperback 336 pages ISBN-10:  
1594771421/ISBN-13: 978-1594771422

### **INTERNATIONAL SAFETY STANDARDS**

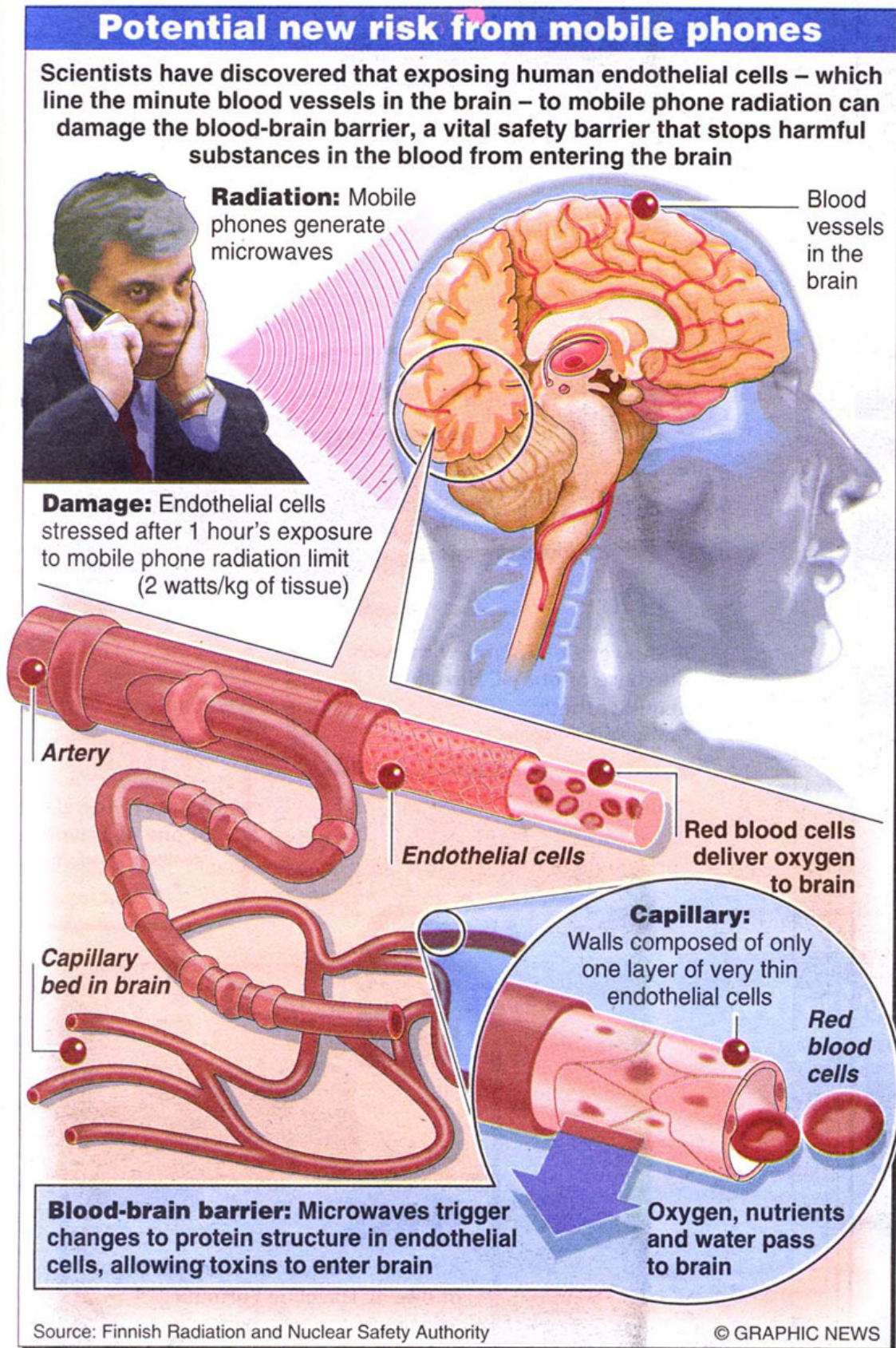
Russia 1.5 milligauss (mG)  
Sweden 2.5mG  
United States 833 - 4,000mG  
United Kingdom 1,000 - 4,000mG  
Australia 1,000 - 5,000mG

These governments justify not acting on further regulation because they claim only ‘ionizing’ radiation causes problems. Their stance is that only radiation that heats tissues significantly are a risk. Clearly ‘ionizing radiation’ does cause problems and mobile phones put out such radiation. This kind of experiment shows that they are not even following their own gross low standards and thus not performing even the lowest levels of their duty of care for the public. It has been repeatedly proven that much lower levels of radiation than that put out by mobiles phones causes significant changes in tissues, but the evidence is assiduously ignored.

The health effects of, and response of the human body to, mobile phones and other sources of domestic radiation needs a lot more research.

## CONCLUSIONS

- Don't believe the "authorities".
- Use the 'precautionary principle', i.e. be prudent, avoid contact or have Tesla's Phone Tags.
- Use the loudspeaker on your mobile phone whenever it is possible.





## Are mobile phones wiping out our bees?

Scientists claim radiation from handsets are to blame for mysterious 'colony collapse' of bees

By Geoffrey Lean and Harriet Shawcross

Sunday, 15 April 2007

It seems like the plot of a particularly far-fetched horror film. But some scientists suggest that our love of the mobile phone could cause massive food shortages, as the world's harvests fail.

They are putting forward the theory that radiation given off by mobile phones and other hi-tech gadgets is a possible answer to one of the more bizarre mysteries ever to happen in the natural world - the abrupt disappearance of the bees that pollinate crops. Late last week, some bee-keepers claimed that the phenomenon - which started in the US, then spread to continental Europe - was beginning to hit Britain as well.

The theory is that radiation from mobile phones interferes with bees' navigation systems, preventing the famously homeloving species from finding their way back to their hives. Improbable as it may seem, there is now evidence to back this up.

Colony Collapse Disorder (CCD) occurs when a hive's inhabitants suddenly disappear, leaving only queens, eggs and a few immature workers, like so many apian Mary Celestes. The vanished bees are never found, but thought to die singly far from home. The parasites, wildlife and other bees that normally raid the honey and pollen left behind when a colony dies, refuse to go anywhere near the abandoned hives.

The alarm was first sounded last autumn, but has now hit half of all American states. The West Coast is thought to have lost 60 per cent of its commercial bee population, with 70 per cent missing on the East Coast.

CCD has since spread to Germany, Switzerland, Spain, Portugal, Italy and Greece. And last week John Chapple, one of London's biggest bee-keepers, announced that 23 of his 40 hives have been abruptly abandoned.

Other apiarists have recorded losses in Scotland, Wales and north-west England, but the Department of the Environment, Food and Rural Affairs insisted: "There is absolutely no evidence of CCD in the UK."

The implications of the spread are alarming. Most of the world's crops depend on pollination by bees. Albert Einstein once said that if the bees disappeared, "man would have only four years of life left".

No one knows why it is happening. Theories involving mites, pesticides, global warming and GM crops have been proposed, but all have drawbacks.

German research has long shown that bees' behaviour changes near power lines.

Now a limited study at Landau University has found that bees refuse to return to their hives when mobile phones are placed nearby. Dr Jochen Kuhn, who carried it out, said this could provide a "hint" to a possible cause.

Dr George Carlo, who headed a massive study by the US government and mobile phone industry of hazards from mobiles in the Nineties, said: "I am convinced the possibility is real."

### The case against handsets

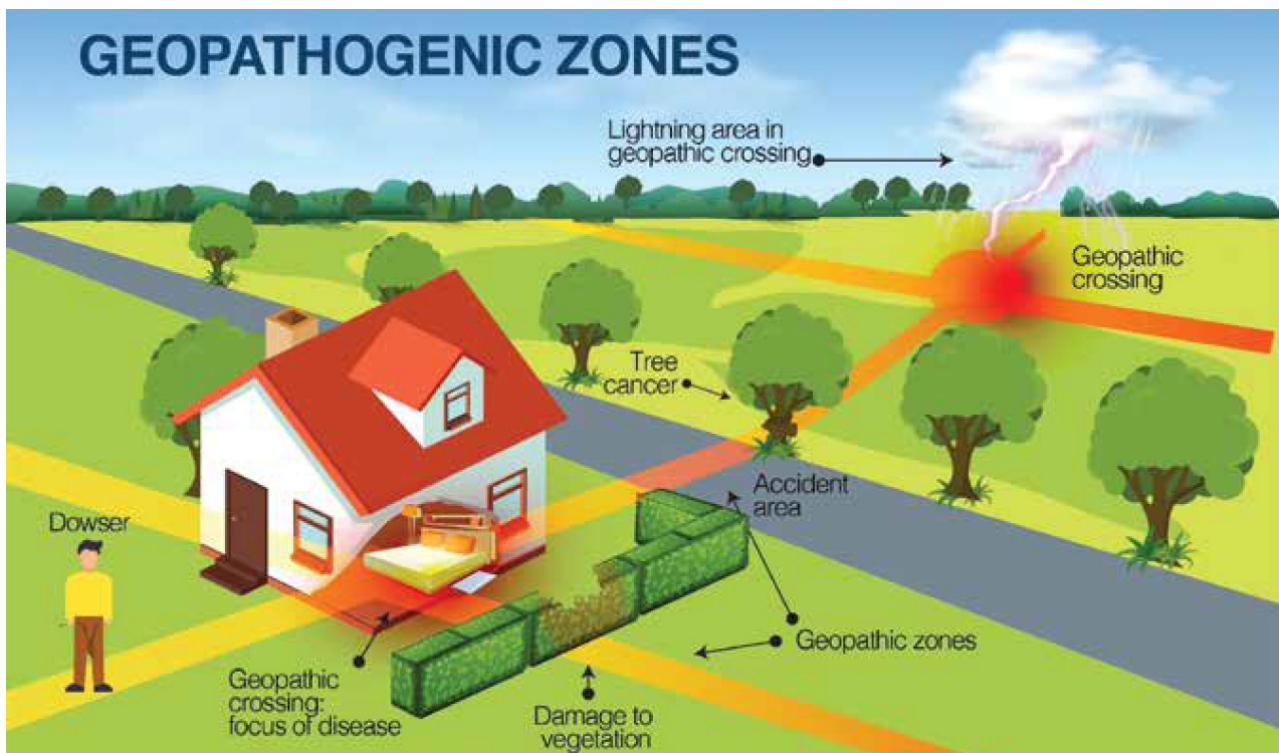
Evidence of dangers to people from mobile phones is increasing. But proof is still lacking, largely because many of the biggest perils, such as cancer, take decades to show up.

Most research on cancer has so far proved inconclusive. But an official Finnish study found that people who used the phones for more than 10 years were 40 per cent more likely to get a brain tumour on the same side as they held the handset.

Equally alarming, blue-chip Swedish research revealed that radiation from mobile phones killed off brain cells, suggesting that today's teenagers could go senile in the prime of their lives.

Studies in India and the US have raised the possibility that men who use mobile phones heavily have reduced sperm counts. And, more prosaically, doctors have identified the condition of "text thumb", a form of RSI from constant texting.

Professor Sir William Stewart, who has headed two official inquiries, warned that children under eight should not use mobiles and made a series of safety recommendations, largely ignored by ministers.



## ***Below Ground Geopathic Stress***

Now even if humans didn't create, generate and transmit electricity, microwaves, radio waves, X-rays and nuclear radiation; and we all lived like Neanderthals, and hunted and gathered for our survival... even the earth has potentially damaging energy lines, underground water, vortexes, radiation, (such as Radon), and countless other energies that are damaging to our bodies, especially if we are exposed to these energies on a daily basis. These frequencies are called Geopathic Stress energies.

The Earth has many geo-electromagnetic field lines crossing its surface. These rise-up through the earth and are called Ley lines. The Earth also has many subterranean rivers and streams.

A person who is adversely affected by these negative earth energies is suffering from what we call "Geopathic Stress". They can lose physical strength, energy and emotional stability. Many illnesses that are claimed to be caused by these forces include: feeling fatigued even after a night's sleep; aching muscles and joints; emotional over-sensitivity, hyperactivity; and aggression.

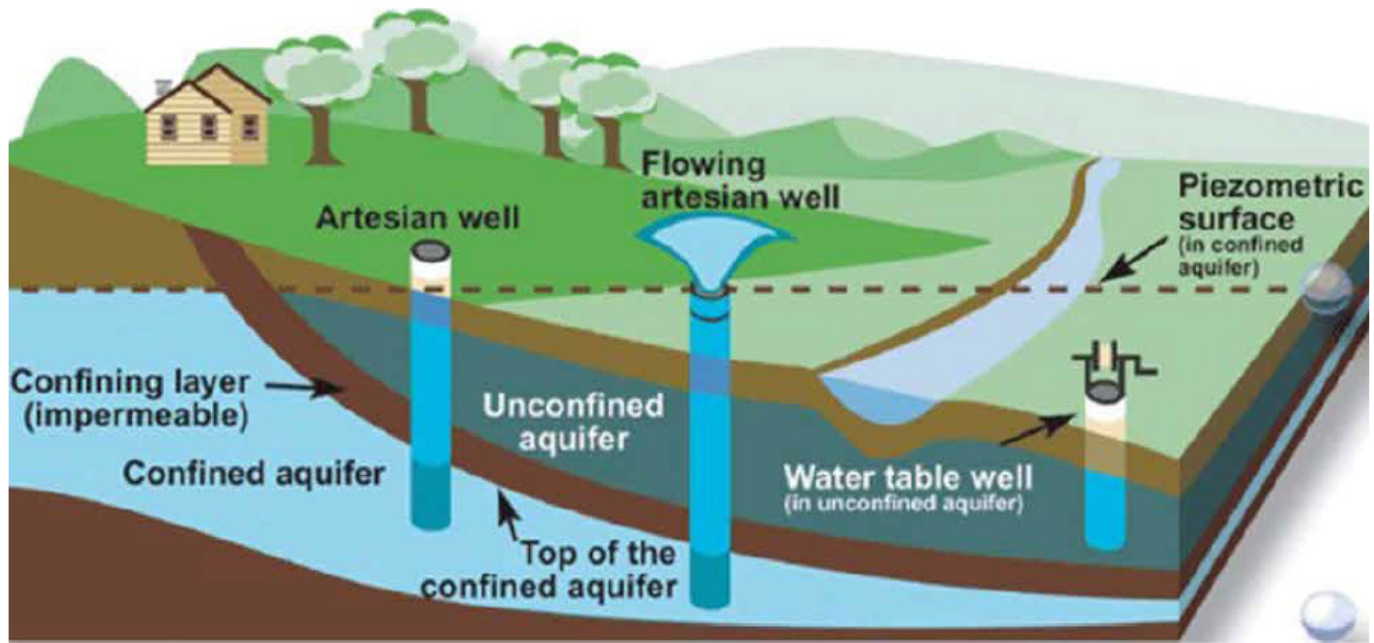
Geopathic Stress causes a weakness of the immune system and can lead to an inability to absorb nutrients properly. This can result in headaches, depression or stress. Geopathic Stress may also be the source of unwanted paranormal activity.

The Bulwich Health Society (UK) conducted research on 25,000 people that had serious health problems, and underground geopathic stress (such as Ley Lines, Vortexes, Energy Wheels or Underground Water), was found in 95% of cancer sufferers, 95% of hyperactive children and 80% of miscarriages.

In other studies, doctors in Europe, who between them have investigated over 10,000 cancer patients, found 92% were living in a GEOPATHICALLY stressed environment. Geopathic Stress does not CAUSE any illness but lowers your immune system and your ability to fight off viruses and bacteria. It is a weak, but continuous, stress on the DNA. Over a period of years, it seriously



disrupts metabolism on a molecular scale. The most common indication of Geopathic Stress is resistance to treatment (either conventional or alternative).



Confined and unconfined aquifers

Illustration: <https://valleywaternewsorg.files.wordpress.com/2019/06/artesian-wells-graphic.png?w=1024>

## ***Underground Water***

### ***What do Underground Rivers Do?***

Because water is a conductor of energy, underground rivers can and do drain your energy away, so it is best not to live above any underground water ways.

These underground rivers and streams also travel under high tension power lines and electrical wires and pick up Electromagnetic Radiation on their way. So, living over underground water can be the equivalent of living under high tension power lines which carry 400,000 or more volts of electricity. In other words, the fast road to cancer land!



Underaround river. Sabana





Ley Lines traverse the world

## ***What are Ley Lines?***

Ley lines are geo-electromagnetic field lines that run all over the surface of planet earth, and they can negatively affect our bodies if we spend too much time within their vicinity.

Ley lines and light are very closely related. Ley lines are cosmic forces originating inside the Earth. Ley lines come from a point several hundred feet below the surface of the Earth. They leave the Earth vertically.

There are also vortexes, which are often called power centers, not normally found on Ley lines. These ley lines have many names such as: hartman lines, dragon lines, Michael lines, Mary lines, Curry lines, etc.

Ley lines travel in perfectly straight lines (seen from a 'birds eye view'), always maintaining the same depth relative to the surface of the Earth and crisscrossing each other over the whole planet. The widths of the lines vary. The larger ones are 1.75m (5 1/2ft) wide (the width of the Roman roads) and are approximately 5 3/4 km (3 miles) apart.

The smaller "Hartman lines" run north/south and are 7.5cm (8 inches) wide and about 1.75m (6ft) apart. The "Curry lines" run northeast/southwest and are narrower, carrying less energy than the Hartman lines.

Hartman lines are named after a German medical doctor Ernst Hartman. In 1950 Ernst Hartman pioneered the field of Geobiology (the study of how the earth affects your health). In Germany, 'Geobiologists' visit patients' houses – they are there to check the house and ground where the patient lives!

These 'Geobiologists' will give the patient recommendations as to where in the bedroom to place their bed. Although this does not sound very scientific, Dr. Hartmann has over 40 years of extensive medical documentation to back up his claims and has published three highly technical books on the study of Geopathic Stress.

Similarly, there are Earth vortexes (energy coming from the Earth in a spiral). Vortexes appear to be points of energy on the Earth, occasionally these points may be on a Ley line but not often. An

analogy might be that Ley lines are the Earth's meridian system and vortexes are similar to chakras, except the energy is spiralling out, not in. Ley lines will sometimes cause health problems.

Vortexes will contribute to health issues if people sleep over them continually. One tragic example of this was a pregnant mother in Northern Queensland, Australia, who lived above a vortex. When her baby was born, the baby was wrapped over and over again 7 times and was strangled by the umbilical cord.

And the ancient people, who lived closer to the land, were smart enough and sensitive enough to know not to build their houses over these very powerful ley lines, because they would be energetically draining or over energizing, especially where ley lines intersect, which creates vortexes, which are very damaging to the body because of the spiralling effect. And the ancient spiritual leaders, such as the Druids, did in fact, mark these ley lines and intersections, or vortexes, with roads, hedges, sacred temples and churches.

In 1929, German Central Committee for Cancer Research in Berlin checked hospital records. It was found that all 54 patients, who had died of cancer since records had been kept, had slept in beds above Hartman Ley line intersections.

In the 1970's, Kathe Bachler, an Austrian schoolteacher, started one of the most extensive and recent research projects. She dowsed 3,000 apartments in 14 countries and interviewed 11,000 people. Her conclusions were that 95% of the children with ADD, or other health problems, that she had investigated slept in beds or worked at desks placed at crossed Ley lines. She also checked a sample of 500 cancer cases, every one of them was found to be sleeping over crossed Ley lines.

## ***SIGNS OF GEOPATHIC STRESS***

- Trees whose branches bow down to the ground [underground water]
- Unhealthy or strangely twisted, gnarled trees [ley lines, radiation]
- Signs of lightning struck trees [underground water]
- Dead or stunted gaps in hedges [ley lines, underground water, radiation]
- Infertile fruit trees [EMR, underground water, ley lines]
- Lawns often have bare patches, moss, silver weed or fungi [underground water, ley lines]
- Vegetable gardens with stunted or mutated growth [underground water, EMR, radiation]



gnarled tree



dieback in hedges



Tree growing in a vortex



Mammals and birds instinctively avoid spending time over Geopathic Stress. It's believed birds are the most sensitive, while horses are a little more resilient. Insects, parasites, bacteria, viruses, ant and wasp nests thrive in Geopathically stressed area.

Sighting any of the above symptoms usually provides a clue to Geopathic stresses.

Gnarled or twisted trees usually grow over intersecting ley lines. The tree will twist as it grows to try to grow away from the stress on all sides.

Fruit trees are the most sensitive, but Oaks, Redwoods and Ashes are more resilient.

Trees show the presence of underground water when their branches bow down to the ground. These trees are showing signs of bad energy ley lines.

The tree on the left has grown on top of two ley lines that cross and has tried to grow out of it. The tree on the right has a cancer growth from ley lines.



[https://1.bp.blogspot.com/-znYnFZDUDXw/Xxqf9l-PA9I/AAAAAAAAABLw/dQnFyUiL5FcB2-rpBMZch6kg2OTsv\\_ofgCLcBGAsYHQ/s1600/branches.jpg](https://1.bp.blogspot.com/-znYnFZDUDXw/Xxqf9l-PA9I/AAAAAAAAABLw/dQnFyUiL5FcB2-rpBMZch6kg2OTsv_ofgCLcBGAsYHQ/s1600/branches.jpg)  
[https://live.staticflickr.com/4844/31266556817\\_30ba91b342\\_o.jpg](https://live.staticflickr.com/4844/31266556817_30ba91b342_o.jpg)  
<https://www.healthytrees.com/wp-content/uploads/2018/12/structural-pruning-1000x300.jpg>



Strong EMFs exist under high-tension powerlines

## ***Above Ground Geopathic Stress***

### ***High-Tension Power Lines, Step-down Transformers, Mobile Phone Towers, Electric Power Substations...***

The electrical cables strung on tall metal structures placed along our countryside often carry 400,000 volts or more. When you stand under these lines you will often hear the hum. In damp weather you can hear crackling as some of the electricity discharges into the atmosphere.

You can stand under the more powerful high-tension powerlines and light up a fluorescent tube. While holding one end of the tube in your hand, the EMFs leaking from the wiring will pass through you on the way to ground. When you are standing under the powerlines you have electrical currents and voltages running through your body.

This happens because you are 75% water (with salts and minerals), which makes your body a perfect conductor of electricity. You can see that the much lower voltages at home will produce a similar phenomenon.

If you have an old TV, you can test your efficiency as an antenna by unplugging the TV antenna wire at the television. You lose the picture. Then place your finger over the antenna plug on your TV and the picture will be perfect again.

You can also demonstrate the effect of EMFs leaking in the house by using a voltmeter. You can demonstrate the effects of high-tension or even street level powerlines by asking a person to look at the wires and then muscle testing them.

You can demonstrate the induction effect of high-tension powerlines by parking a car under them. The static charges will build up in the metal and the rubber tyres will only discharge to earth slowly. When you touch the car, a large spark will be produced with a resulting shock.

Despite these and other measurable effects, the official position of the electrical power companies is, "There is no possibility that even long-term exposure to high EMFs can have any ill health effects."



However, people living under or near high-tension powerlines complain too often of a variety of symptoms, with no other apparent causes, for anyone to accept the power company's assurances.

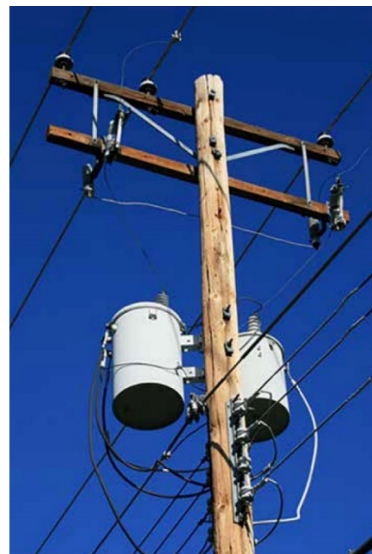
**Common complaints:** Perpetually lacking in energy; Nauseous or dizzy; Asthma; Perpetually feeling stressed...

The most famous example of illness caused by high-tension powerlines is the English village of Fishpond. High-tension power lines effectively surround this village. Here, many residents suffered similar symptoms over a long period, but no clear connection to the villagers' health was made until the power voltages were increased. No one in the village knew of the increase, but the incidence and severity of symptoms increased dramatically.

Magnetic flux measurements were taken in the village homes of those complaining of ill effects. Some houses had high readings, other houses further away from the lines, had magnetic readings of only 1mG but the occupants still showed similar symptoms.



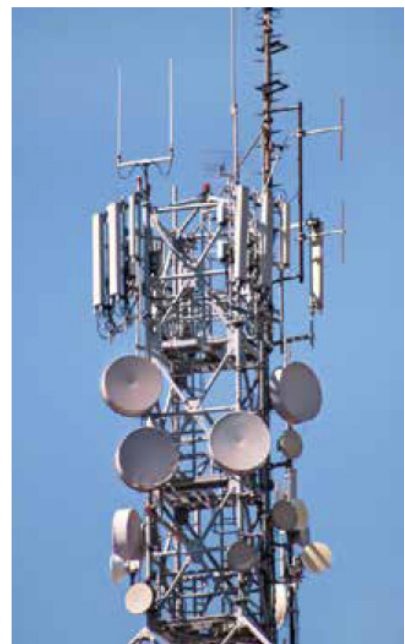
Fluorescent tubes lit by high-tension powerlines



Step-down transformers on a power pole



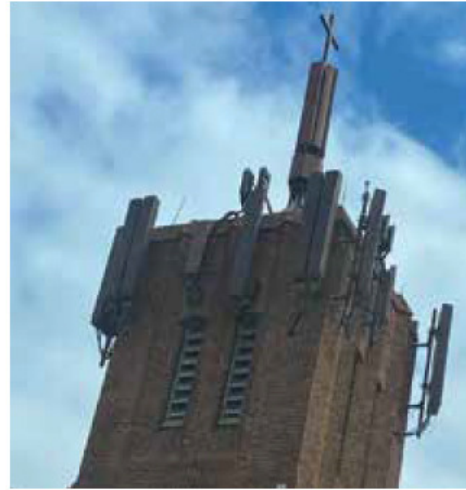
Phone towers disguised as trees



Mobile phone repeater tower

Mobile phone towers are seen on buildings of all sorts - residential, commercial, and churches. Look carefully, they may even be disguised as trees!





Phone towers situated on buildings

## ***Dowsing or Scientific Instruments?***

Occasionally you will hear of individuals like Venceslav Palnovsky of Prague, who discovered that subterranean water streams could be measured by the fading of ultra shortwave transmissions on a radio.

Professor Herbert Konig of Munich found a person's blood sedimentation rate changes when they sleep or stay in a Geopathically stressed area, leading eventually to heart disorders.

In Switzerland, Dr. Joseph A. Kopp claimed that scientifically measurable effects occur, such as an increase in electrical conductivity of the soil and air. An increase in UHF waves and an intensity of infrared radiation has also been found above underground water.

Kopp also found that mice placed in wooden cages above underground water had a variety of symptoms: restlessness, biting each other, and eating their young.

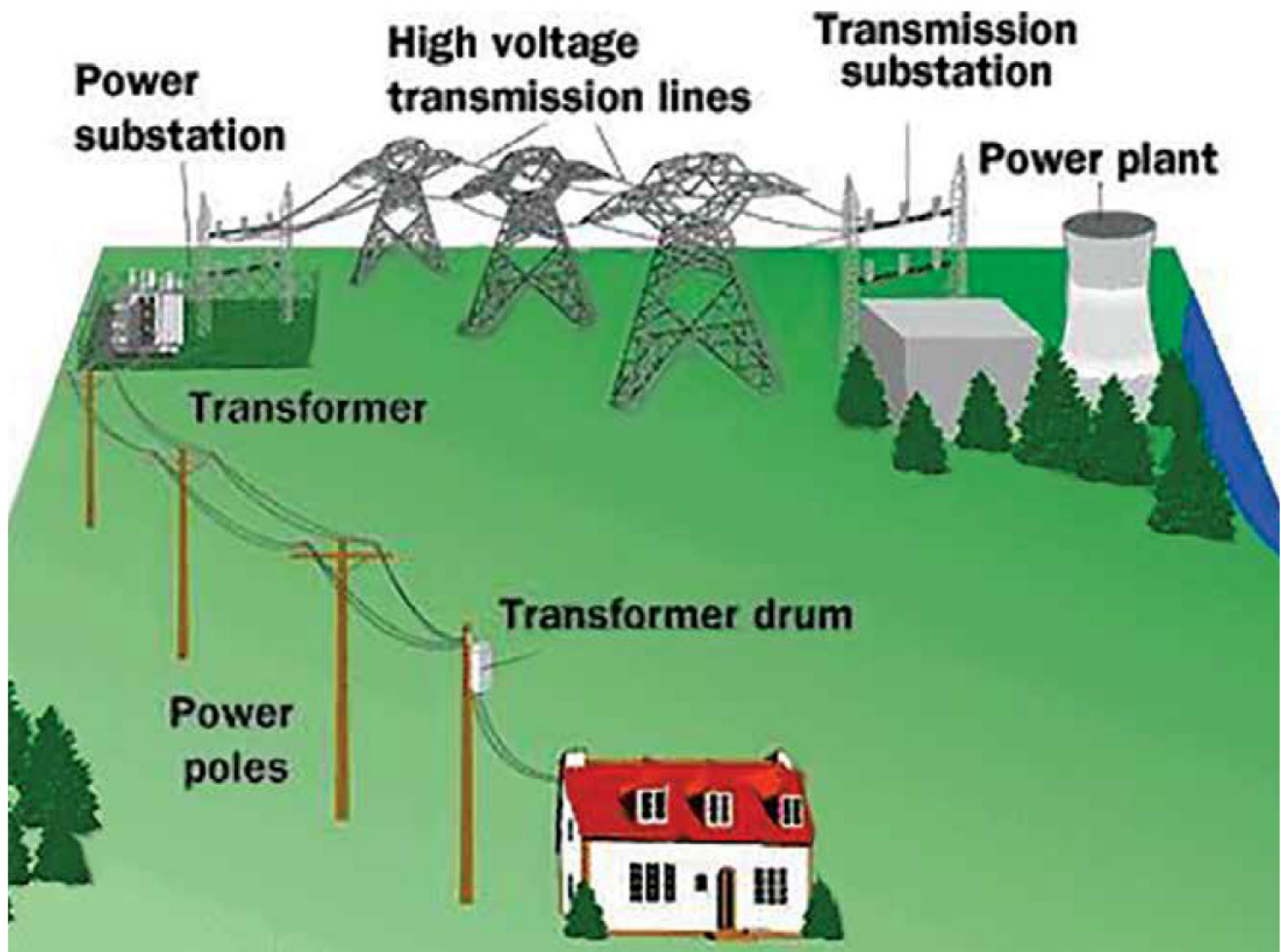
Recently, the electro-chemical potential directly above underground water has also been scientifically measured. Oscilloscopes have been used to verify the discoveries of researchers in France.

Despite all the studies, there has been no firm 'scientific' evidence that has been able to disprove dowsing. Nor has there been any scientific research that can replace the work of earth Dowzers.

The Police, NASA, and the Armed Forces regularly use Dowzers.



Dowsing using a pair of rods



Possible sources of Geopathic Stress



Substations: rural and inner city

Photos: powerlines - [https://1.bp.blogspot.com/-Nu2Hbe7pHkk/W9iXOFpsK7I/AAAAAADTgg/dsE\\_lp-fgwN4vsPQXPr3qlwio4iKOGPgCLcBGAs/s1600/power%2Blines%2Bnear%2Bhome.jpg](https://1.bp.blogspot.com/-Nu2Hbe7pHkk/W9iXOFpsK7I/AAAAAADTgg/dsE_lp-fgwN4vsPQXPr3qlwio4iKOGPgCLcBGAs/s1600/power%2Blines%2Bnear%2Bhome.jpg)  
 fluoro tubes - <http://nerdist.com/wp-content/uploads/2016/05/power-lines.jpg>  
<https://d1jbg4la8qhw2x.cloudfront.net/wp-content/uploads/2018/12/substation.jpg>  
<https://cdn.newsapi.com.au/image/v1/0a97b1d475814bf76a22cfae71eae37?width=1024>  
[https://wonderfulengineering.com/wp-content/uploads/2013/12/camouflaged\\_cell\\_towers-18.jpg](https://wonderfulengineering.com/wp-content/uploads/2013/12/camouflaged_cell_towers-18.jpg)  
[https://2.bp.blogspot.com/-3dd2YIKssak/XJNzQFFV\\_xI/AAAAAAB3Eg/cOZBdW729pqoSGe\\_XshNwdbbXjEckVyyAClCBGAs/s1600/19.jpg](https://2.bp.blogspot.com/-3dd2YIKssak/XJNzQFFV_xI/AAAAAAB3Eg/cOZBdW729pqoSGe_XshNwdbbXjEckVyyAClCBGAs/s1600/19.jpg)  
<https://imgur.com/TIvDhrR>  
[https://4.bp.blogspot.com/\\_5xkDx\\_-kv3I/TTahBVqy9cl/AAAAAABNk/idy4mku8XUc/s1600/building+res+satellite.jpg](https://4.bp.blogspot.com/_5xkDx_-kv3I/TTahBVqy9cl/AAAAAABNk/idy4mku8XUc/s1600/building+res+satellite.jpg)  
<https://thumbs.dreamstime.com/b/telecommunication-network-repeaters-base-transceiver-station-tower-wireless-communication-antenna-transmitter-repeater-138584000.jpg>



# ***How do I find out the Level of Radiation or Geopathic Stress that I have in my House or Environment?***

There are many electrical frequency and radiation measuring devices that are available on the market, depending on what specific frequency you wish to measure, that you can purchase to measure the frequencies and radiation in your house, and these meters range from \$250 to \$10,000. Or you can hire someone to measure these frequencies for you.

For Geopathic stress energies, such as leylines and underground water, you will need to learn how to dowsing and feel these energies or hire a dowser to dowsing these energies for you. Or you can use a pendulum, to find out where these energies are.

You can also use kinesiology, or “muscle testing”, to measure the negative effects of energies upon your body, and the positive effects of Tesla’s Technologies.

You may also use a very affective technique that I teach called, “Tummy Testing”, to measure the negative effects or positive effects of various energies on your body, and to test and see if you have underground water or geopathic stress. You may teach yourself how to “tummy test”, from my article on my website at: [www.ZaKaiRan.com](http://www.ZaKaiRan.com).

Tummy Testing is based upon the fact that when your body is stressed by something, such as Electromagnetic Radiation, you will struggle to breathe, or you will breathe from your chest. Whereas, when you are relaxed and un-stressed, you will breathe deeply and naturally from your belly.



**Dowsing using a pair of rods**



**Oscilloscope**



## ***So why do EM field and radiation affect us in a negative way? And what is the Solution?***

The reason we are negatively affected by Electromagnetic Frequencies and Radiation, is because our bodies are made up of 75% water and water is an excellent conductor of electricity. And our bodies contain salts and minerals that help conduct electricity even better.

Most of our 100 trillion somatic cells are almost 86% water. This fluid contributes to the structural integrity, as well as the nature and quality, of the energy and information carried through the body. This is essential to our cellular health which of course affects our overall health. EMR affects water, therefore, it influences our bodies and our biochemical communication processes, including our immune systems.

Now the long terms effects of Electromagnetic Frequencies and Radiation have been studied extensively by countless doctors and researchers, and it has been proven repeatedly that the long-term effects of exposure to these energy fields causes cell mutation, cancer and all manner of disease. So, the trial is over, except for those people who prefer to live in denial and ignorance.

Now, it is just a basic fact that electromagnetic technologies, electricity, radio waves, microwaves, etc., and even nuclear radiation, are a part of life on planet earth. And it is plainly obvious that these chaotic energies can and do harm our bodies.

And if you care about your health, then you naturally will want to do something to support your health by alleviating the stress that these energies place upon your body.

And you can futilely protest and fight against modern technology, progress, and its negative affects upon you and society, but that will only create more negativity in your life. Because, based upon the Law of Attraction, "you get more of whatever you think about most of the time". So, if you think negatively and complain continually, and only see the negative aspects of life, then you will have nothing but negativity in your life.

Or, alternatively, rather than placing so much of your priceless and infinitely powerful creative energy upon trying to stop and resist technology, you could take a more enjoyable and easier path and focus your attention upon empowering yourself and creating positivity in your life, by blessing your life and your family's lives, with technologies that harmonize and nullify the negative effects of these chaotic and damaging frequencies.

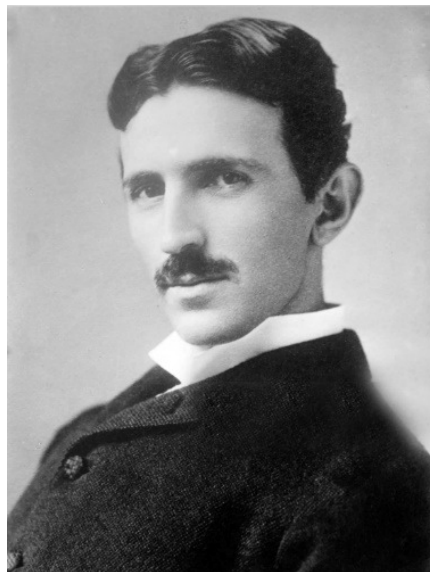




## ***The Solution!***

### ***Tesla's Innovative Technologies!***

Based on the testing I have done, and over 20 years of experience with these technologies, nothing compares to the effectiveness of **Tesla's Innovative Technologies**, to harmonize and nullify the negative effects of electromagnetic frequencies and radiation, available at: [TeslaProducts.com](http://TeslaProducts.com).



The technology behind Tesla's Innovative Technologies came directly from the scientific genius Nicola Tesla, who in the 1800s, when he realized that the 50HZ frequency alternating current that he and George Westinghouse were supplying for the American people and the world, was going to be damaging to our bodies.

He invented the scientific theory of how to create powerful harmonic fields to negate the negative effects of Electromagnetic Frequencies and Radiation, which he passed on to a man by the name of Ralph Bergstresser, 2 weeks before his "suspicious" death, and just days before his scheduled meeting with the president to tell him of the damaging effects of electricity.

This ground-breaking technology eventually made its way to Australia, who began producing these technologies under the name of Tesla's Innovative Technologies.

Nikola Tesla was a genius whose work was the basis for the electric 20th century. His desire was to help mankind and give us the knowledge of electricity, which freed humanity from much physical work.

Nikola Tesla was born midnight July 9/10th 1856, on the old Austrian-Hungarian border, the son of a Serbian preacher. He migrated to America in 1884, with four cents in his pocket and a vision in his head. After working for Thomas Edison for two months, Tesla had a clash of ethics with Edison and left his employ, choosing to dig ditches.

After hearing Tesla talk, George Westinghouse asked Tesla to become his partner and produce Tesla's dream of alternating current. Tesla and Westinghouse became friends and business partners with Tesla doing the inventing and building, while Westinghouse provided the capital. Over the next 59 years, Tesla was an extremely prolific and remarkable inventor.

Tesla owned hundreds of patents worldwide for 126 different inventions and held several patents in sequential order. He designed countless other inventions but didn't patent them.

Between the years 1870 to 1925 he received 27 different honorary degrees from universities all over the world. Tesla understood how light and pyramid energy worked.

Tesla's first and greatest invention was that of the induction motor which uses a rotating magnetic field, and is driven by alternating current (AC), the electricity we use today. This is a mainstay of making AC usable. It enables us to put electricity to work.

Some of his other inventions were:

\*Hydro Power Generators. Radio. \*Neon and Fluorescent Lights. \*Radar. \*The Tesla Coil (still used in cars today). \*Remote Control. \*Microwave...

Tesla and Westinghouse designed, and built, the world's first hydroelectric power station at Niagara Falls, in 1885 which sent power 56km (34miles) to Buffalo New York. This was a first because, until then, Edison's electric company could only produce direct current (DC). And had only been able to send DC power one or two street blocks before it would run out of strength.

Westinghouse and Tesla agreed they did not want to make money from their production of electricity. They would only charge a small amount for the use of electricity, (Tesla invented a meter to measure usage) just enough to cover building and ongoing repairs; it was to be their gift to humanity.

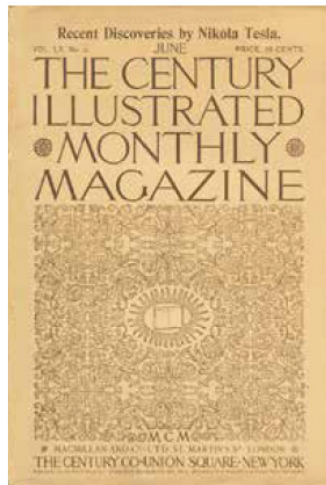
Three large banks saw a great financial future in this new AC power and approached Westinghouse with a large offer. Westinghouse refused the offer, so the banks bought up his shares without his knowledge and at the annual general meeting informed George Westinghouse he no longer owned his company and was not wanted.

The bankers then offered Nikola Tesla \$3.5 million for all his patents and knowledge. Tesla refused the money and paid dearly for that decision; his laboratories were burned to the ground.

After the fires, one of the bankers, J. P Morgan, took over the financing of Tesla's work.

By late 1886 Tesla realised the AC electricity he had helped bring into common usage would prove to be one of the most dangerous things to the health of all living things on Earth.

In 1899 Tesla produced what he called 'free energy' at his Colorado Springs, Colorado, laboratory. This electricity would not only be free but safe as it was harmonious with our bodies.



Tesla, himself, wrote in "The Century Illustrated Monthly Magazine" of one experiment of lighting three incandescent light bulbs in the ground with no wires attached which he did at Colorado Springs in 1899.

Earlier in the same article, Tesla wrote of lighting four to five hundred lamps through a one wire connection using only a small percentage of generation capacity from his electrical oscillator.

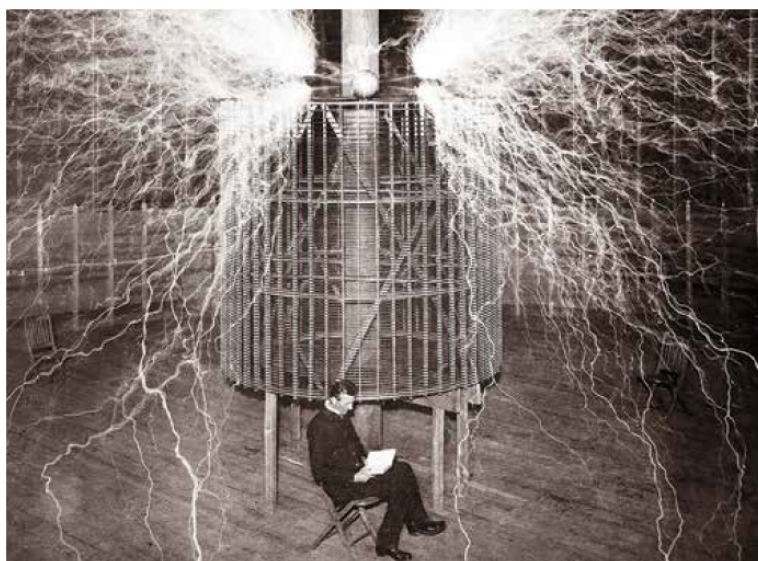
Inez Whitake Hunt in the online Encyclopedia Britannica wrote, "He also lit 200 lamps without wires from a distance of 40 km (25 miles) and created man-made lightning, producing flashes measuring 41 metres (135 feet)."

One of the 3 bankers (J P Morgan) set about destroying Tesla and his name.

Could you imagine not having to pay for the power you use and not polluting our atmosphere?

Just weeks before his death, Tesla handed Ralph Bergstressor, a young physicist in the Air Force, his paperwork on how to counteract the biological effects of his inventions.

Nikola Tesla died in 1943 in unusual circumstances. Although most books will tell you he died in his sleep, friends and family claim he was run over by a black limo as he crossed the road to feed his pigeons. Tesla's body was then placed back in his hotel room. This happened two days before he was to meet with the President of the United States to explain the damage that his inventions would cause, including the Philadelphia experiment.



Nikola Tesla, in his Colorado laboratory, in a picture with his 500,000-volt Tesla coil. With this coil, he created lightning bolts.

# ***Photons and Tachyon Energy***

Photons are quantum packets of light carrying energy, they move at the speed of light and demonstrate particle and wave properties (i.e. moving in straight lines as well as in waves).

Photons carry the electromagnetic force and are fundamental subatomic particles. They have energy and momentum but no mass which allows them to travel at the speed of light.

Tachyons are hypothetical subatomic particles that travel faster than light, first proposed by Gerald Feinberg in 1967.

Do not be confused by the term Tachyon. There are 2 companies using the name Tachyon. One is a Japanese company called "Tachyon Energy" that has been making products called Tachyon Energy Beads. These have a use-by date and have been around since about 1995/6. The second is an American company called "Tachyon Technologies" that has been marketing products since about 2002/3. They have products that are similar to Tesla's but the real effects of these are not as pleasant.

- The physical body is almost wholly electrical, chemical and mechanical. The medical profession seems to have forgotten this and they work mainly on the chemical side.
- Up until now, the scientific community has relied heavily on what their five senses show them. The energy field around all living things cannot be seen, smelled or felt with our five senses. This has caused a big conflict between science and those of us who use our extra senses.
- Understanding Tachyon and Photon Energy gives you an understanding of the electrical aspect of our body.
- With the development of Kirlian Aura Photography and Polycontrast Interference Photography, the physical world can now see the energy fields around all living things. This energy field is called the aura, which is pure Photon/Tachyon Energy.
- Dis-eases such as cancer and arthritis are electrical problems within the body caused by an imbalance in the human energy field.
- Dr Wilhelm Reich, in the 1950's, made the discovery that cancer and arthritis were electrical diseases. He claimed these diseases could be cured with 'Orgone Energy', described by him as being Universal Energy.

Dr Reich trapped this energy in an Orgone Accumulator, which was made by alternating organic and inorganic matter. The problem with this was Dr Reich's use of iron, which created its own unnatural magnetic field and has an unbalancing effect. Also 'Orgone Energy' is not a pure form of Photon/Tachyon Energy.

Electromagnetic energy cannot be seen, tasted or touched. The "scientific" leaders of the day and the F.D.A would not believe Dr Reich's work. He was consequently jailed, and his books destroyed. He died in prison 6 months later in 1957.



# ***The Connection to Tesla's Products***

- The Pyramids were given to humankind after the demise of Atlantis and Lemuria to help bring 'light' back to the planet and teach humankind our place as 'Light Beings'.
- Interestingly enough, when an eastern bloc country took an energy photo inside the Great Pyramid it showed human DNA (32 strands) going through the centre of the Pyramid.
- The Pyramids are antennas bringing in Photon/Tachyon energy. When they were built, their purpose was to disperse this light energy into the Planet, but over time, with the shifting of the magnetic poles, plus human interference, the effectiveness and strength of the Pyramids' functioning has declined.
- 'Tesla's Innovational Technologies' act in the same way as the Pyramids were originally designed to function (antennas bringing Photon/Tachyon light energy in), but unlike Pyramids, Tesla's products do not have a negative area.
- These products, after water cutting, doming, and colouring by our artisans, are placed in a device that alters the atomic structure or signature of the metal. This process takes anything from 24½ hrs to 7 days depending on the designed purpose of each individual product.
- This device was developed by two physicists using Nikola Tesla's original work. Carol was made custodian and took possession of this device, including instructions and contract, in 1994.

She established Tesla's Innovational Technologies. Before this time Carol had been involved with the Nikola-Tesla-developed 'Purple Plate Technology' (EIP) produced by scientists Ralph Bergstressor (1915-2001) and Noel Orchard. Unfortunately, these products were unable to raise vibrations past 7.9Hz.

The planet's vibration in May 2005 was 16Hz, in March 2007 it was 18.8Hz. In January 2009 20.9Hz, and in January 2020 30+Hz. The device used with Tesla's products alters the atomic structure within metal causing the metal to act as a transceiver in the same manner as the Pyramids.

- To function at its true potential, the metal used must be a pure element not a man-made alloy such as steel.
- Titanium was chosen to be the carrier metal, because it is a very pure element. It is also extremely strong, which is why it is used by NASA on spaceships to withstand the extreme heat from re-entry.

On the 'elements periodic table', Titanium's atomic number is 22. Its crystalline structure is hexagonal in nature, similar to the geometric structure of human bone. It is non-allergenic, and the titanium used by Tesla's is grade 1. The only additive to it is oxygen.

- The Tachyon/Photon energy's source for both the Pyramids and Tesla's Innovational Technologies originates from the Central Sun of our Universe, which is the origination point for all life, seen and unseen.

Talia, from the 'All That Is' website, says, "In spiritual terms, we perceive the Great Central Sun or the Central Sun as a higher level of consciousness. An awareness that can be attained through spiritual evolvment. It embodies the teachings and light codes of the golden ray, wisdom, love and unified consciousness. It allows us to understand the zero point of creation, the space where all potential exists and where all is one."

# ***How do Tesla's Innovative Technologies work?***

Tesla's Technologies products work biologically, they do not attempt to shield radiation. To understand how our products work you need to look at how electromagnetic radiation affects you. Just as you have a liver and kidneys in your body, so you also have an electromagnetic circuit.

When your body encounters EMR, the body attracts and absorbs the radiation. The body keeps loading up on EMR and cannot discharge it. The EMR causes overload, and wherever there is a weak link in the body, that's the first place where ill health manifests.

Tesla's Innovative Technology products are designed to assist in relieving the burden of these excess EMFs and ameliorate the problems associated with living in such an EMF-dense environment.

Tesla's products alter the effects of EMR/EMF, Wi-Fi, radio, radiation and microwave transmissions. The products neither absorb nor deflect these broadcasts, they merely alter the way these emanations affect all living things - plants, animals, and humans.

During the proprietary manufacturing process of Tesla's products, the vibrational signature of the metal (titanium) is varied so that it acts as a transceiver of specific photons (packets of light/energy). These products then have the effect of strengthening the user's energy field, thus helping to alleviate the bio-energetic effects of some man-made EMF/EMR. The process is similar to an antidote which neutralises a poison and educates the body to resist the poison next time.

Each piece in Tesla's range is designed to assist the human bio-energetical field. Depending on its size, shape and construction, different devices have differing purposes and capabilities.

The primary metal used to make Tesla's Innovative Technologies is Titanium, which is one of the hardest metals on earth, and is used by Nasa on the outside of rockets and space shuttles. It is also used in the construction of artificial limbs, and the reconstruction of damaged bones, because the body does not typically react with or reject this pure metal, that interestingly, has a similar geometric shape to our bones.

Then the vibrational signature of each titanium plate is altered energetically using harmonizing energy fields, so that the titanium acts as a transceiver of harmonic life-force energies, such as Chi or Prana, and Photons or Tachyon energies, which are packets of light/energy.

This Photonic/Tachyon energy creates a beautiful light filled, harmonic field, that essentially harmonizes any chaotic frequencies that happen to be within that field, including Electromagnetic Frequencies, Electromagnetic Radiation, Geopathic Stress energies..., and even nuclear radiation!

The titanium is then cut into specific geometric shapes, which carry different specific frequencies. Then each plate is meticulously and lovingly colored by our amazing artisans, so no two plates are alike, and uniqueness and individuality shines through in every plate.

You may choose from an array of designs, colors, sizes and shapes, to find the perfect Tesla's Plate that compliments your space and energy, which means you're not just selecting an energy harmonizing tool – you're acquiring a unique artistic masterpiece, making each plate a one-of-a-kind addition to your space.

Now, no matter what you do or where you go, it is impossible to get away from Electromagnetic Frequencies, Radiation, Geopathic Stress, and all the other nasties that we are bombarded by daily.

So, if you prefer to live in a stress-free harmonized environment, then you're either going to have to live in a metal box, live underground, or live in the deep desert, the bush, or the mountains...

Or, you could take a much gentler path and just simply invest in something that harmonizes all those chaotic frequencies, like Tesla's Innovational Technologies, by going to:

[www.TeslaProducts.com](http://www.TeslaProducts.com)

---

## ***Product Testing***

To confirm the efficacy of these new generation products, Tesla's Innovational Technology commissioned extensive independent bio-energy testing using:

1. Kirlian Diagnostic Photography (Russia)
2. Aura Photography (USA)
3. Micro Capillary Microscope (China)
4. Acutec Ryodoraku (Australia)
5. Prognos (Germany)
6. Electroencephalograph (EEG)
7. Electrocardiograph (ECG)
8. Infrared Thermometer

One hundred test subjects were put forward by health practitioners of various modalities to participate in the testing.

The subjects were tested using one of the above testing techniques to establish a base reading before supply of the Tesla's Technology.

The test subjects were then provided with Tesla's products which they wore continuously in their normal environment and doing their normal activities.

All subjects were tested a week later using their respective testing procedures. Some were tested multiple times, up to forty days later.

Of the 100 people tested, 100% of these people had been adversely affected by man-made EMFs and EMR. These bio-energy tests showed the subjects' bodies returning to a more natural balance while still in the same fields but using Tesla's Innovational Technology products.

While the titanium products themselves do not put the body into total balance, the tests have shown the products appear to increase or decrease the bio-energies in appropriate areas, which may encourage the body to detoxify, thereby aiding the body's natural healing potential.

---

## ***Kirlian Diagnostic Photography***

Kirlian Diagnostic Photography testing is done by taking the measurement of energy at the finger tips, the computer shows the results of energy around the figure. This testing is used for diagnosis in many hospitals in Eastern Europe, claiming 98% accuracy.

Kirlian tests were also done over a 56-day period on a number of people wearing Personal Pendants while they continued on with their normal life. Results showed an improvement in the bio-energetic fields of participants who wore the PPs in the correct position continually during the test period.



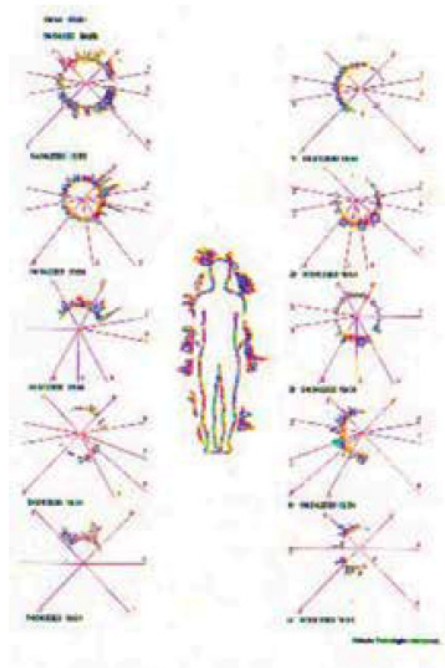


Figure 1.  
This test shows energy around the client's weakened body before wearing a Personal Pendant.

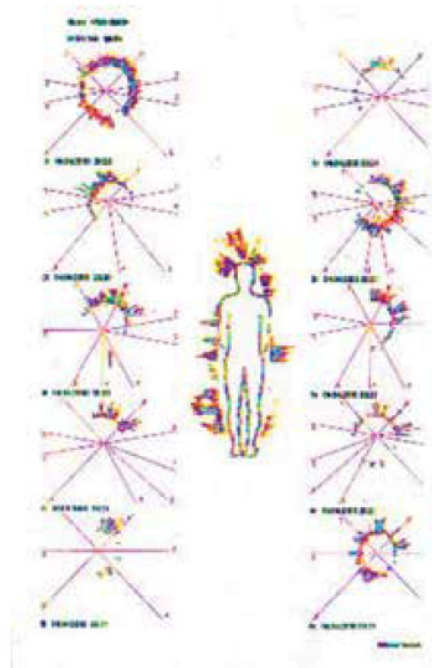


Figure 2.  
Testing after wearing the Personal Pendant for twenty minutes indicating an increase in energy.

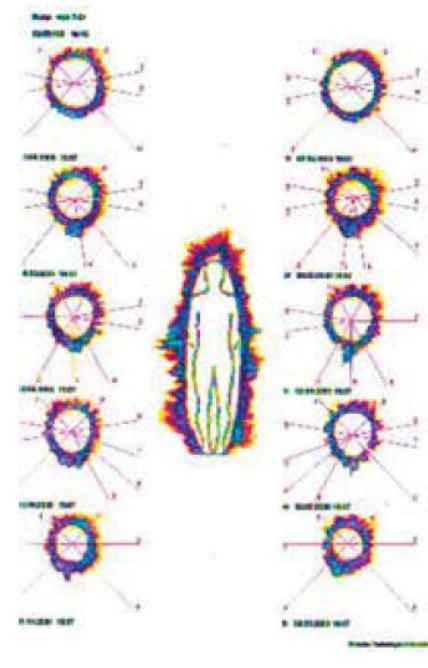


Figure 3.  
This test shows a much stronger and more vibrant energy field after client has worn the Pendant for twenty-eight days.

## ***Acutec Ryodoraku Tests***

Testing was done by Vital Balance Naturopathic Clinic in Brisbane Australia.

Ryodoraku is a method of electrical conductivity testing along acupuncture pressure meridians and was developed by Professor Yoshio Nakatani.

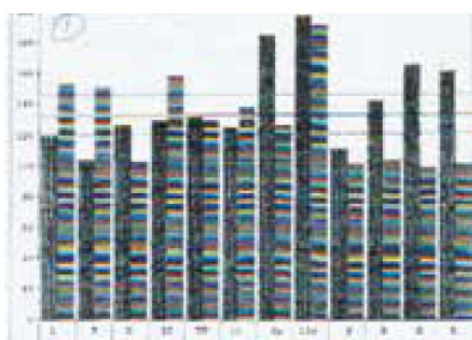


Figure 1.

Tests done via the meridians show the client with a number of meridian points stressed. This is interpreted as the person being out of balance.

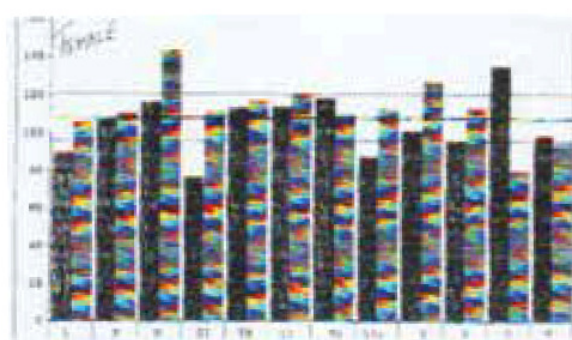


Figure 2.

This test shows more balance in the meridians after client held a Travel Plate for 5 minutes.

## ***Aura Photography***

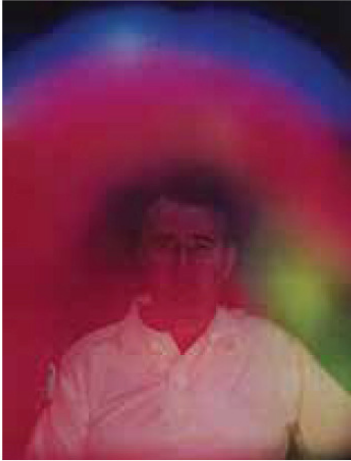


Figure 1.

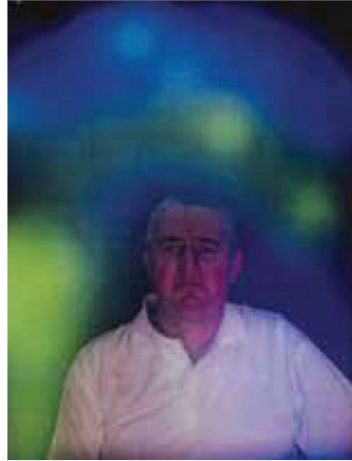


Figure 2.



Figure 3.

Independent testing done by an Aura photography company. The Aura is a visual expression of the energy field that emanates from the body. These photos show the reaction of the emotional, mental, and physical bodies at the time the photographs were taken.

In Figure 1 we see John with an untreated mobile phone attached to the righthand sleeve of his shirt. The phone is ringing. It smashes John's auric field with microwave radiation showing serious damage to the right side of John's body.

In Figure 2 (previous page), John is receiving healing from a group of energy healers. While this shot is taken, John's normally blue and pink aura is returning. The green is the colour of healing.

Figure 3 shows John with a ringing mobile phone which has been treated using Tesla's Phone Tags. No damage to the auric field is shown.



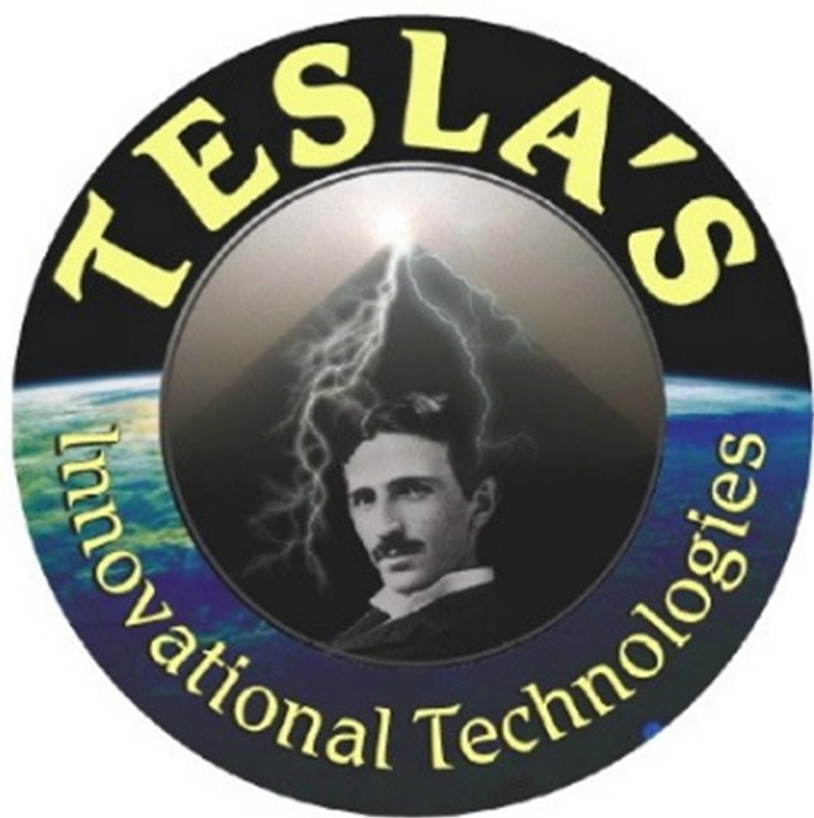
A Micro Capillary Microscope

Biological testing has been done on dozens of people using: Micro Capillary Microscope; EEG; Acutec Ryodoraku (measuring meridian strength); and other electro-derma stress diagnostic computers.

Meridian strength expressed in Hertz	Averaged stress levels		
65			
60			
55			
50			
45			
Stabiliser not plugged in, computer switched off.		Stabiliser not plugged in, computer switched on.	Stabiliser plugged in, computer switched on.

Table 1: Comparative stress levels using Tesla's Stabiliser

This table displays the aggregated and averaged test results of acupuncture meridian strength when testing Tesla's Electron Stabiliser across the various platforms.





# ***Tesla's Harmonizing Products***



## ***What Tesla's Products Should I Buy?***

### ***Three Main Factors***

There are three main energy factors that are damaging to our bodies:

#### **EMF, EMR & Geopathic Stress.**

**EMF** stands for Electromagnetic Frequencies that emanate from electrical wiring and electrical appliances, including TVs, Refrigerators, Smart Meters, Tablets, Laptops, Computers, etc.

**EMR** stands for Electromagnetic Radiation, which are radio waves that travel through the air and penetrate buildings and our bodies. These radio waves are able to cook live tissue (microwaves), and emanate from: Mobile Phones, Cell Phones and TV/Radio/Mobile/Cell Phone Towers, etc.

And above and below ground **Geopathic Stress** energies that emanate from Electrical Transformers, High-Tension Powerlines, Leylines, Hartman Lines, Underground Water, etc.

But **Tesla's Innovational Technologies** has created the solution by producing technologies that emanate amazing harmonizing energy fields that make these formerly chaotic energies no longer damaging to our bodies.

### ***Basic Overview of Tesla's Products to create your Harmonic Bubble!***

**Personal Support + EMF/EMR:** Adult, Teen, Child and Furry Friends Pendants

**Additional Personal Support + EMF/EMR:** Pocket Plate, Car Travel Plate

**Technology Harmonization:** Phone Tags, Laptop/tablet Tags, Computer Plate

**EMF:** Electron Stabiliser

**EMR:** 5G Small & Large Oyster Plate, Large 8-Sided & 14-sided House Plate

**Water Harmonization:** Water Kit & Portable Water Kit



***Where to begin? We recommend beginning with a...***

## **Personal Harmonizing Pendants**



To begin with, it is essential to own a [Personal Pendant](#), which strengthens your Thymus gland and strengthens your immune system, to better withstand the negative effects of damaging frequencies.

These pendants are available in different sizes for the whole family, for adults, babies, children, teenagers, as well as your pets.

[Tesla's Personal Harmonizing Pendants](#) are designed to transmit Life-Force Energy (Chi/Prana) to your thymus gland, which strengthens your immune system and auric field, so that when wearing a pendant you are better able to withstand the negative effects of the chaotic frequencies inherent with Electro-Magnetic Frequencies & Radiation that emanates from electricity, appliances, computers, phones, wi-fi, radio waves, television waves, microwaves, etc.

Personal pendants also activate all your brain frequencies (alpha, beta, theta & delta) which raises your vibration to a higher harmonic state.

There are countless designs, colors and shapes to choose from! And even if you purchase a specific design, it will be totally unique and unlike any other pendant, because each pendant is individually colored by our amazing artisans!

Tesla Pendants can also be used to speed the healing process of cuts, bruises and minor burns/scalds..., and help relieve pain from headaches, insect bites, scuffed knees and bumps; by placing the Personal Pendant over the affected area concave side facing into the affected area.

But these pendants do not directly harmonize Electromagnetic Frequencies and Radiation and all of the energies we are affected by on a daily basis. There is not a personal pendant on planet earth that has the strength to harmonize the extremely strong electromagnetic energies that our bodies are subjected to daily. If there was, then it would be too strong to wear! So, any pendants out there in the marketplace that "claim" to harmonize everything are just misguided or lying.

To harmonize these energies, you need much larger plates that are not typically worn on the body, such as the Tesla's Pocket Plate, Computer Plates, Car Plates, House Plates, etc.

The Tesla's Pendant is worn over the thymus gland because the thymus is very sensitive to EM Radiation. The thymus also produces a hormone called 'thymosin'. Thymosin stimulates the making of T-cell lymphocytes, also known as leucocytes or white blood cells, which are produced in the bone marrow. T-cells directly combat microorganisms and toxic chemicals.

The general early response to radiation and severe stress from EM Radiation is an increase in lymphocytes in the blood stream.

Tesla's Innovational Technologies' premier product is the Personal Pendant (PP). It was created to strengthen an individual's energy field. We have PPs for adults, teens and children.

The Personal Pendant must be worn continuously for the first 24 hours. After 12 hours your PP will have adapted to your energy matrix and then should not be worn by others. It can however still be used to help them if needed (with pain or burns etc.)

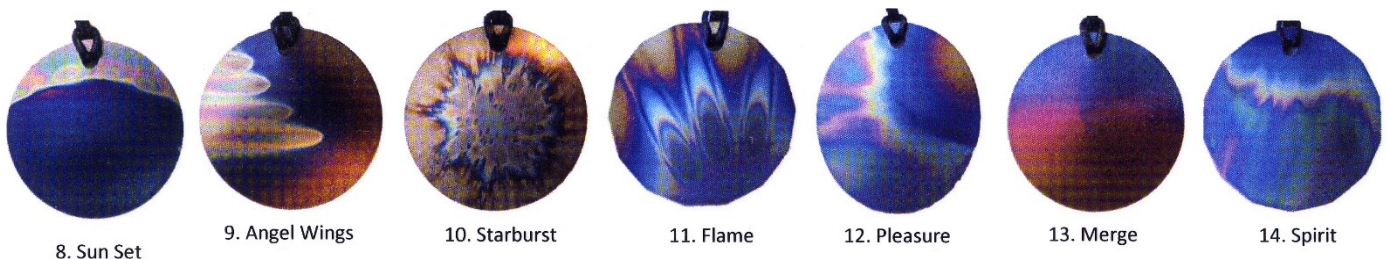
The Personal Pendant was specifically designed to be worn over the thymus. The thymus gland is a major controller of the immune, ageing, and lymphatic systems. The PP comes with an adjustable waxed cotton cord so it can be worn around the neck, positioned over the thymus. This is roughly three of the owner's finger widths from the suprasternal notch, the dip between your collar bones.

Pendants can be worn all the time. The proprietary-treated metal in the PP is not affected by any chemicals (body acids or chemicals in water etc.), so showering or swimming with the PP on is recommended. Colours may change but that will not affect function.

Many people find wearing their Personal Pendant to bed helps with their sleeping, but there are about 5% of people who find wearing their Personal Pendant to bed makes them too energised to sleep. Sleep with your Pendant on for at least four nights before making a decision regarding wearing it to bed.

The Pendant's energy may also aid in lessening sunburn. Often when out in the sun you will find the Pendant getting unbearably hot. In tests using a laser thermometer, we have found the Pendant to be two degrees cooler than the skin. This perceptual difference is the Pendant's way of getting you out of the sun.

All Child's Pendants are oval shaped and were specifically designed to help children with both the effects of EMR/EMFs and to help protect them from the unseen energy realm. The Pendant, when worn over the thymus, works with the immune system, and also activates the lower brain frequencies thereby calming children who may be ADHD. It is the appropriate size for children zero to ten years.

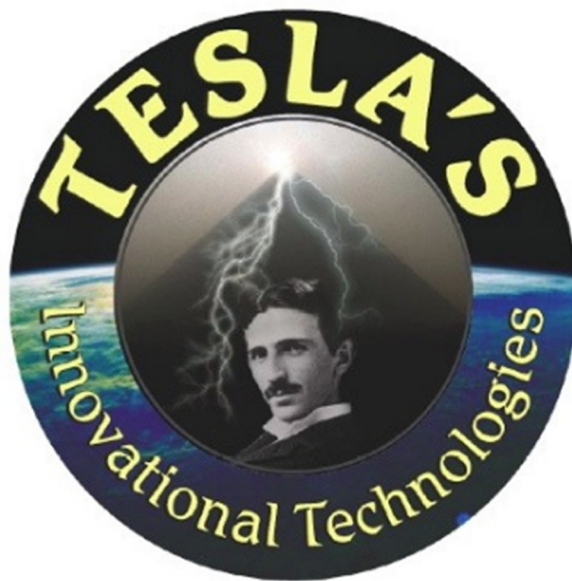


## ***HOW TO CHOOSE A PENDANT***

The most important choice is shape! There are many different styles and colors of pendants. But style and color are less important than shape! All the Pendants work to harmonize Electromagnetic Frequencies, and strengthen the immune system, your energy field & life-force energy, all the time and at the same rate or level. But each geometric shape adds a different dimension to each pendant, so, we recommend using your intuition to choose the optimal shape for yourself!

But, as a general rule, the more angular designs are stronger, and the rounder, more feminine designs are softer, which is why all child, and teen pendants are oval. And the shapes get stronger moving up from Oval to Round, then 14-Sided, then 10-sided. And finally, 8-sided, which is the strongest pendant energetically, and the one we recommend for people who work in front of computers for extended periods of time. But still use your guidance, as another shape might be better for you.

So first, use your intuition and choose what shape you are drawn to. Then choose design and color. (Note: The surfboard style is the same as Oval energetically)





# TEEN PENDANTS



Teen  
Dolphin  
Gold



Teen  
Dolphin  
Blue



Teen  
Dolphin  
Patterned



Teen  
Surfboard  
Multi



Teen  
Surfboard  
Flame



Teen  
Surfboard  
Patterned



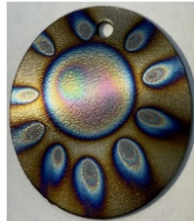
Teen  
Surfboard  
Sunset



Teen  
GJ



Teen  
Orb



Teen  
Glow



Teen  
Apricus



Teen  
Serendipity

The [Teenage Pendant](#), like the [Child's Pendant](#), is also oval to help protect from the unseen world. The two surfboards add to an oval. When worn over the thymus, it helps the immune system, allows clearer thinking, has a calming effect, and helps the young adults cope with the effects of EMR/EMFs. It is the appropriate size for ages ten to 18 years.

There are a variety of shapes for Adult Pendants. Please see "How to Choose a Pendant" for the shapes and how to help your client choose the Pendant that is right for them.

The Personal Pendant, when worn concave facing the body over the thymus, helps the immune system strengthen the energy field and helps stop the effects of EMR/EMFs.

It can be used to address minor cuts, burns, and bruises. When space is restricted, the octagonal Personal Pendant can be substituted for the Small Octagonal Plate and used for moderating the fields from batteries on:

- motor bikes
- four wheeled bikes
- motorised equipment
- jack hammers
- phone junction boxes, and
- electric wheelchairs.



## ***Furry Friends Pendants***



***Small Dogs & Cats  
Single Surfboard  
(design choices  
are random)***

***Paw Print Gold  
Medium or Large  
Dogs***

***Paw Print Patterned  
Medium or Large  
Dogs***

***Paw Print Eclipse  
Medium or Large  
Dogs***

***Paw Print Blue  
Medium or Large  
Dogs***

Just as we are affected by electro-magnetic radiation, so too are our pets. In response to many requests over the years, Tesla's now have a range of [Furry Friend Pendants](#) which addresses this problem and bolsters your furry friend's energetic field.

Like the Personal Pendant, the Furry Friend Pendant will adapt to the individual's matrix after 24 hours of wear and should not be worn by another animal.

The Furry Friend Pendant is designed to be worn on your pet's collar. Use the cable ties provided to attach it. Remember the Tesla's Pendant itself should **ONLY** ever have a titanium or non-metal link affixed to it.

The Furry Friend Pendant comes in three sizes: small, medium, and large. Bathing, swimming, and most chemicals do not adversely affect the Furry Friend Pendant, so it can be always worn.

### **A Tale of Two Cats**

Gregory has a friend Emily, who has two rescue cats, Benji and Castor. Benji was a scaredy cat and would not come out from underneath the bed. Castor was a bully and always bashing Benji.

When Gregory delivered a Tesla's House Kit to Emily, Benji came out from under the bed and went to Gregory, Castor came in and was nice. Emily was really surprised by the behaviour.

"The cats like the Tesla's plates. We have Furry Friends for pets. It helps them just the way your Personal Pendant helps you," Gregory told his friend.

So Benji and Castor got Furry Friends. Castor stopped beating Benji up and Benji became a sociable cat. The neighbourhood cats liked to come to the veranda of the house too.

One day, Emily rang Gregory in a panic. Castor had lost his Furry Friend and was back to his old ways. An emergency delivery of a new pendant was accomplished, and harmony was restored.

---

## **Phone Harmonizing Tags**

Our next recommendation is, you absolutely, positively, need 2 harmonizing phone tags for your mobile/cell phones to harmonize the microwave frequencies that operate your phones, which is a similar frequency used in microwave cookers.



Don't cook your brain with microwave frequencies from your phone!



4 colors to choose from: Multi (Rainbow), Blue, Silver & Gold

Digital mobile phones use a microwave/radio frequency that pulses at 217 times per second. The home cordless telephone also produces a high magnetic field. Studies at University Luebeck (Germany) suggests “measured biological effects can extend at least 2 to 3 metres from some phone’s antenna”. Some people complain of blurred vision or vague head pains (Dr B. Hocking) (11).

And Dr Carl Blackman has stated that studies have shown there have been “increases in brain and head cancers with increased cell phone use per day and per year over 8–12 years” (12).

The Phone Tag is placed on the outside of the phone. When fitted correctly, in accordance with the instructions, this small yet powerful device, may help alleviate some effects when the phone is in use.

Industry studies have shown the portable hands-free fittings for mobile phones to be of benefit, 100+mG at the phone when in use, and 3mG at the portable hands-free earpiece.

The Phone Tag can be used for altering the frequencies not just coming to and from mobile and cordless phones, but also small handheld rechargeable battery-operated equipment, such as electric toothbrushes, shavers, etc.

This little plate has been used to help with eye injuries. For example, when stuck to the side arm of a pair of glasses, the energy will beam in behind the eye, affecting behind the eyeball. Put on the front of the eye via an eye-patch, influence will occur from the front of the eye. It can be taped to various parts of the body to aid restoration.

Exquisitely sensitive to subtle electromagnetic frequencies, human brains and bodies depend on tiny electrical impulses to conduct complex life processes including the ability to read, recall and respond to words. Acting as antennas, our bodies easily tune into signals from radio and microwave transmissions.

Electromagnetic (EM), Microwave, and Bluetooth fields emanating from the antennas of digital mobile phones, or the EM radio frequencies from cordless phones are believed to cause bio-energy effects when the phone is in use.

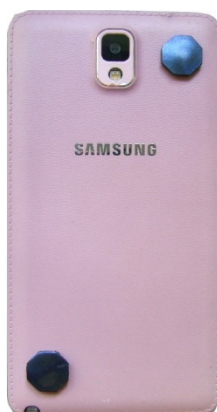
Viewing with the micro-capillary microscope has shown blood flow slowing down considerably while the person was using a mobile phone, whereas the same person's blood flow increased when the same phone was fitted with Phone Tags.

Thermal imaging has shown heat patterns when a mobile phone without a Phone Tag is placed just 10mm above the skin, but when the same process was done with a Phone Tag fitted to the mobile phone there was no heat pattern from the phone.

The objective in treating a mobile phone is to render it biologically harmonious to the user and anyone nearby. The microwave/radio frequencies that radiate from the phone have been tested in Europe and found to affect people biologically up to 9 metres (29ft) away.

The Phone Tag alters the chaotic pattern in the transmissions to and from the antenna of the phone. It comes ready to fit with double-sided tape already attached.

An instruction manual on the proper mounting of your phone tags is sent with each purchase.



Or, for tablet and laptop users, we recommend a set of  
**[Tablet/Laptop Harmonizing Tags](#)**

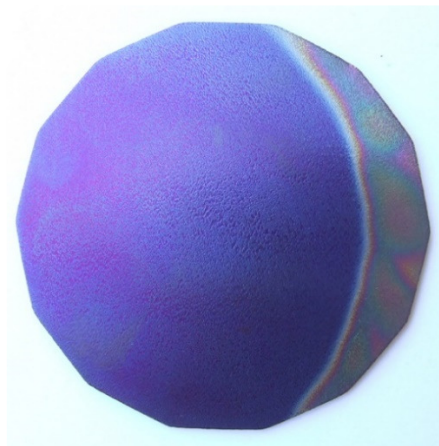


This set of four tags is effective for moderating the fields emanating from Tablets and Laptop Computers.

The Tablet/Laptop Tags are slightly thinner and flatter than Phone Tags, (rather than concave), so, the harmonizing energy emanates equally from both sides of the tags.  
Tablet/Laptop Tags come only in silver color.

---

### **[Pocket Plate](#) [aka "Mini Travel" Plate](#)**



(Image is roughly the size of a Pocket Plate)

The next recommendation is the Pocket Plate. To harmonize the chaotic frequencies and radiation you encounter in the world while driving, flying or traveling in public transportation. It is excellent for short flight travel, to harmonize Radar, EMF & the effects of the Sun's radiation which can alleviate jet lag.

The Pocket Plate is also excellent for day-to-day life and going out into the world as you travel in your car, on public transport, and work or shop in buildings, malls and stores, which are filled with fluorescent lights, WiFi, countless phones and electrical frequencies and radiation. As well as high tension power lines, electrical transformers, and radio, TV and microwave transmitters.



By wearing the Pocket plate, wherever you go, no matter what energies you are surrounded by, you are surrounded in a harmonic energy field, which harmonizes those negative energies.

The Pocket Plate is especially handy for local airline travel because when you are flying in an airplane, you are flying high above the stratospheric ozone layer, which normally filters out the damaging rays of the sun and cosmic radiation.

On a single 7-hour flight, it is estimated that you are affected by the equivalent radiation of a single chest X-ray. But longer international flights, where the planes fly higher in the stratosphere, and especially flights over the northern or southern hemisphere, where the atmosphere is thinner than at the equator, the radiation exposure is considerably higher and is estimated to be the equivalent of 3-6 chest X-rays.

The other bonus is you can keep your Pocket Plate with you in your pocket or hung in a pouch around your neck for when you go through the metal detectors at airports, and it won't set off an alarm! Because titanium does not set off metal detectors!

And I can tell you from my experience of traveling with a Pocket Plate for short flights, and a House Plate for international flights, I am calm and happy, and everyone else on the plane is very happy and calm, including children! I sleep very well, and there is little or no jet lag upon arrival.

For longer international flights, we recommend the [Car "Travel" Plate](#) or the [House Plate](#).

The 60mm x 60mm Pocket Plate was developed to calm the bio-energetic system. This plate is very much heart connected, and for this reason can be worn in a shirt pocket (or in a side pocket of pants), with concave side facing into the body.

The Pocket Plate is a fun and versatile plate to have. It does not bond to your matrix and may be shared amongst family and friends.

The Pocket Plate can also be used for healing uses, such as the healing of cuts, bruises and minor burns/scalds; headaches, insect bites, scuffed knees and bumps... It is excellent for placing over cuts as it reduces the flow of bleeding, stops the pain and scarring of mild burns, bruising goes away quickly, and it encourages the immediate commencement of healing.

It is also beneficial to energize water and food; to sweeten fruit; to clear pesticides; to improve the taste of inexpensive wine, and many other uses.

The Pocket Plate can also be used to broadcast energy via photographs with the concave side facing down onto the head of the person/animal in the photograph. The Pocket Plate is also excellent for healing purposes, to alleviate minor pain and to energize water & food.



Dr Masaru Emoto has a Pocket Plate!

Then, if you use a desk-top computer, we recommend a

## ***Small Octagonal Plate***

aka the

## ***Computer Plate***

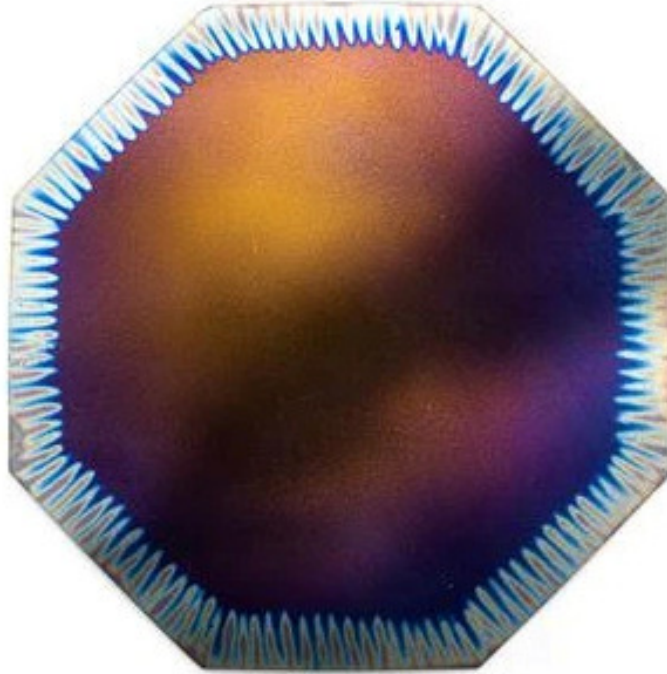


Image is roughly the size of a Computer Plate

The Small Octagonal aka “Computer” Plate is a hard worker and a strong plate; therefore it is not beneficial to be worn in a pocket or wallet like the Pocket Plate.

The 70mm x 70mm Small Octagonal Plate was originally developed to work with computer screens to help relieve eyestrain.

It has now been tested and can work to help alter the stress coming from Wi-Fi, other gaming devices, smart meters, inverters and batteries.

To help relieve the eyestrain associated with the computer screen, place the Small Octagonal Plate on the desk at the base of the computer flat screen, concave side up, with a straight edge in line with the front of the screen.

For a laptop computer, place the Small Octagonal Plate concave side down on the computer keyboard either left or right of the computer touch pad.

To help alter the stress coming from Wi-Fi or other wireless game devices, place your Small Octagonal Plate on the top of the base station of your game devices. You can also put it concave side down (dome side up), with a straight boundary along the edge of the game devices. (You should consider putting a Phone Tag on the handheld controls).

To help alleviate the negative effects of the continuous pulsed electro-magnetic radiation from “Smart” electricity meters, the Small Octagonal Plate can be placed on top of your Smart Meter with the concave side facing down, straight edge of plate aligned with straight edge of meter. Use in a similar fashion for inverters and batteries.

## *The* **Bare Essentials Kit**

**5% Discount!**

The **Bare Essentials Kit** provides the essentials for your personal harmonizing needs.

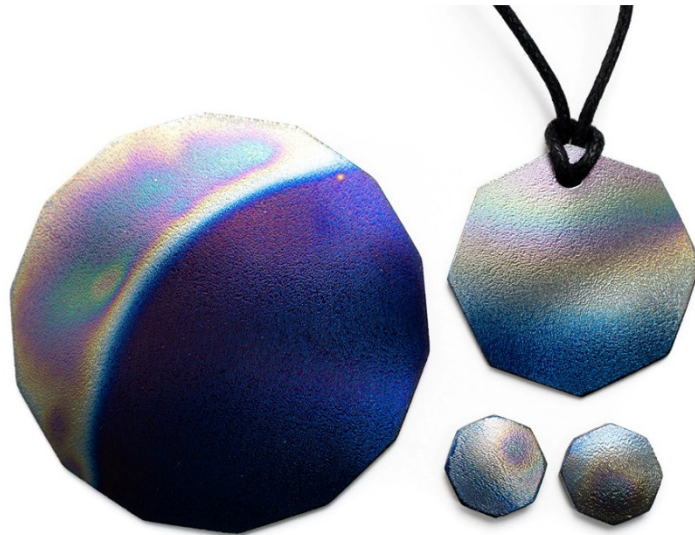
This kit includes 1 **Adult Pendant**, 2 **Phone Tags** & 1 **Pocket Plate** (or **Car Plate upgrade**).

The Personal Pendant attunes especially to its wearer, strengthening your energy field.

The Phone Tags harmonize the negative effects of microwave radiation from your phone.

And the Pocket Plate enhances your life by harmonizing the chaotic frequencies and radiation you encounter in the world while travelling in your car, on public transport, short flights, or as you work or shop in buildings, malls and stores.

We also have the [Teen Personal Kit](#) with 1 **Teen Pendant**, 2 **Phone Tags** & 1 **Pocket Plate**



# ***Creating a Harmonic Bubble***

The “Bubble of Harmony” is a term to describe the effect of using the essential products from Tesla’s Innovative Technologies listed above to create a beautiful de-stressed, harmonic environment, for your entire house, business or work environment.

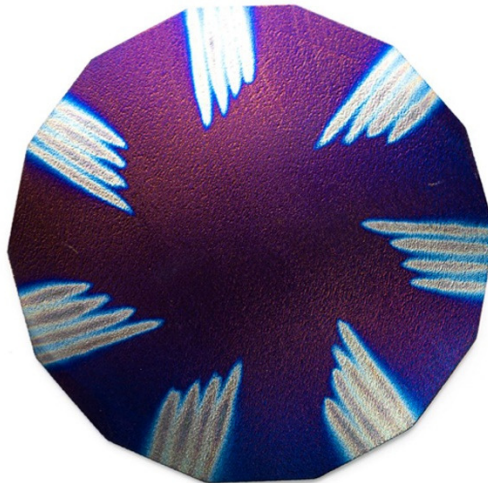
In addition to strengthening your individual bio-energetic field with a Personal Pendant, Pocket Plate, and Phone Tags, the following components help create your beautiful stress-free “Harmonic Bubble”:

- The **5G Oyster Plate** produces a specific non-Hertzian energy to ameliorate EM Radiation and make chaotic energies more biocompatible.
- The **Electron Stabiliser** alters the EMFs from electricity from chaotic to coherent and is designed to lift the oppressive weight that electrically sensitive people may feel.
- The **Water Kit** addresses the problematic nature of water coming into our homes. It creates “Structured” Water.
- And to calm the chaotic energy in your vehicle or wherever you travel, we have the **Car Travel Plate**.

The [Discounted House Kits](#) contain these components and other elements which will help you create your Harmonic Bubble! More information below!

---

## ***The Car Travel Plate***



Optimally, you need a Car Plate to harmonize the electricity in your car as well as keep you in a harmonic space as you drive around amongst the chaotic energies in the world from mobile phone towers, as well as TV and radio towers, high tension power lines, etc. It can also be used to harmonize EM Radiation in a small flat or one room office.

The Car Travel Plate is also handy for traveling via public transportation and international flights, to harmonize Radar, EMF & the effects of the Sun's radiation which can alleviate jet lag, because when you are flying in an airplane, you are flying high above the stratospheric ozone layer, which normally filters out the damaging rays of the sun and cosmic radiation.

On a single 7-hour flight, it is estimated that you are affected by the equivalent radiation of a single chest X-ray. But longer international flights, where the planes fly higher in the stratosphere, and



especially flights over the northern or southern hemisphere, where the atmosphere is thinner than at the equator, the radiation exposure is considerably higher and is estimated to be the equivalent of 3-6 chest X-rays.

The other bonus is you can keep your Car Plate with you in your pocket for when you go through the metal detectors at airports and it won't set off the alarm, because titanium does not set off metal detectors.

And I can tell you from my experience of traveling with a Car Plate, I am calm and happy, and everyone else on the plane is very happy and calm, including children! I sleep very well, and there is little or no jet lag upon arrival.

With all the added electronic devices now standard in new cars, added stress has been placed on our human electrical system and may be a contributing factor to the increase in "road rage" and fatigue levels (RACV 1999). With the Car Plate positioned in a vehicle, drivers and passengers may find they feel calmer with diminished fatigue.

Your Car Travel Plate was developed to place a specific energy into the wiring of your car thereby helping to calm the bio-energetic system of both the driver and passengers. This product is then able to help negate some of the adverse biological effects of man-made chaotic EMFs in vehicles. The Car Plate may help ease fatigue while driving or traveling in planes/trains.

The Car Plate can also be used to enhance other therapeutic treatments. Just place the Car Plate under your massage/treatment table concave side up, which puts the client into an Alpha brain-wave state, thereby making any energy/healing/massage work more effective.

The Car Travel Plate is especially excellent for the treatment of amalgam fillings in the teeth, which stops the electromagnetism causing the amalgam to leak mercury. It can also be used to clear radiation that has been stored by the body from X-Rays.

Instructions on the proper placement of your Car Plate is sent with each purchase. Advanced usage of Car Plate for healing, amalgams, X-rays etc., is available from free Advanced Training.

---

**For your House, Apartment or Office, you will need an**

***14-Sided House Plate,***

***an 8-Sided House Plate***

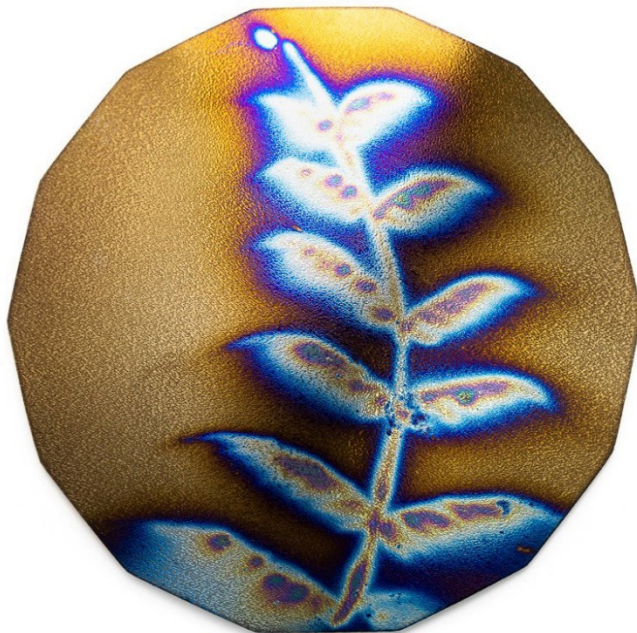
***a 5G Small Oyster Plate***

***or a 5G Large Oyster "Farm" Plate***

To harmonize the EM Radiation from:

5G mobile phone microwave towers/frequencies, TV/Radio towers/reception, Wi-Fi, satellites, radar, high voltage power lines, etc. As well as Geopathic Stress, such as underground water and ley lines, that may be negatively affecting your house or the flora and fauna around your property.

Making these frequencies biologically compatible and energizing plant and animal life.



## **Large 14-Sided House Plate**

The Large 14-sided Plate is 1.6mm thick. The 14-side configuration of the plate has a very calming influence on its surroundings as well as harmonizing air-born radiation from 5G mobile phone microwave towers/frequencies, TV/Radio towers/reception, Wi-Fi, satellites, etc.

The Large 14-sided House Plate is especially good when you have geopathic stress energies under your house such as leylines and underground water, and you want to harmonize these frequencies below the house but have a nice gentle energy above ground. And in this case, this gentler single plate, is pointed concave side down.

## **Large 8-Sided House Plate**

The Large Octagonal Plate is also 1.6mm thick. Similarly to other 8-sided plates in Tesla's range, the octagonal shape works just that bit harder. It is extremely good in areas where train and tram lines are close by.

The energy from both the 8-Sided and 14-Sided House Plates have two different dimensions. (1) Vertical and horizontal, i.e. spanning approximately 20m (65ft) from the concave side and approximately 8m (26ft) from the dome (convex) side.

And (2) Encompassing an area approximately 1/3 hectare, (1 acre) outwards, thereby affecting electrical transformers close by, if pointed concave side upwards.

The 8-Sided and 14-Sided House Plates are very versatile and have many uses, including: Transmitting Healing Energies. Self-Healing of various ailments including varicose veins, auric clearing, amalgam sealing... Use as a Car Plate. X-Ray radiation clearing. International airline travel. Public transportation travel. Room/house clearing. Food & Water harmonization.

Directions on these many uses available for free in the Advanced Training.

If you live or work in a high-rise apartment or office building, you will need a

### **5G Small Oyster Plate**



The **5G Small Oyster Plate** is made from two specially developed 1.2mm thick, 14-sided plates. It is a double plate system of two plates that have been joined together, concave side to concave side.

This configuration enables the plates to work synergistically and multiplies the effects of the 14-sided plate.

The 5G Small Oyster Plate, creates a ½ hectare (1.25 acre) and 12 stories (six floors up, six floors down), radius of harmonic frequencies around your apartment, business or small property, making the inhabitants or office workers calmer and more amiable.

---

## ***Large Properties, Farms & High-rise Office Buildings***

### **5G Large Oyster “Farm” Plate**





If you live in a high-rise apartment building in a very busy city surrounded by many electromagnetic frequencies from electrical transformers, high-tension powerlines, etc. Or, if you work in a busy high-rise office building, or own a large farm or property, especially if it has geopathic stress energies, we recommend the 5G Large Oyster Plate, to harmonize the EM Radiation from: 5G mobile phone microwave towers/frequencies, TV/Radio towers/reception, Wi-Fi, satellites, radar, high voltage power lines, etc.

As well as Geopathic Stress, such as underground water and ley lines, that may be negatively affecting your house or the flora and fauna around your property. Making these frequencies biologically compatible.

The 5G Large Oyster “Farm” Plate covers an area of 12 hectares (30+ acres). 12 stories up and 12 stories down of a building.

The 5G Large Oyster Plate is made from two specially developed large 1.2mm thick, 14-sided plates. It is a double plate system of two “House” plates that have been joined together, concave side to concave side. This configuration enables the plates to work synergistically and multiplies the effects of the normal 14-sided House Plate.

Additional benefits of the 5G Large Oyster Plate: Farm animals and people are calmer and more amiable. Increased healthy plant & tree growth. Improved nutrient value of fodder for animals. Healthy increased bird life and frog life that had previously disappeared from the area. (The presence or absence of frogs is a well-known barometer for the suitability of areas for human habitation). And any genetically altered plants may revert to their original patterning.

---

To harmonize the Electromagnetic Frequencies, aka electricity, in your home, including computers, TVs, and all appliances in your home or office, you will need an

## **Electron Stabilizer**



(Image is roughly the size of an Electron Stabilizer)

The Electron Stabilizer turns your appliances into negative ion generators, re-polarizing them from what they usually generate, which is positive ions. Negative ions are beneficial to our body's health because our cells essentially contain a negative charge, whereas positive ions, generated from appliances, air conditioners, computers, TVs, etc., affect us in a negative way.

The Electron Stabiliser was designed to lift the oppressive weight that electrically sensitive people feel when exposed to EMR and EMFs. It is best fitted to a power cord which has a steady flow of power.

After plugging a Stabiliser in, some of the most common comments from clients are:

- Less fatigue.
- Fewer headaches.
- More energy.
- Less computer static.
- Calmer work environment.
- less eyestrain while working on the computer.

Some people have found that if they hold the power cord either side of the white pod, palms up, it seems to help harmonize the vibration in their liver.

Man-made EMFs radiating out of all electrical wiring is chaotic. The Electron Stabiliser makes the flow of electrons more coherent which causes the electrical frequency to be more harmonious with the human body.

The coherent flow causes all electrical motors, fridges etc, to be more efficient and quieter. If you have used a Tri-field meter to show the mG levels before installing a Stabiliser, the readings will read about the same with the Stabiliser installed.

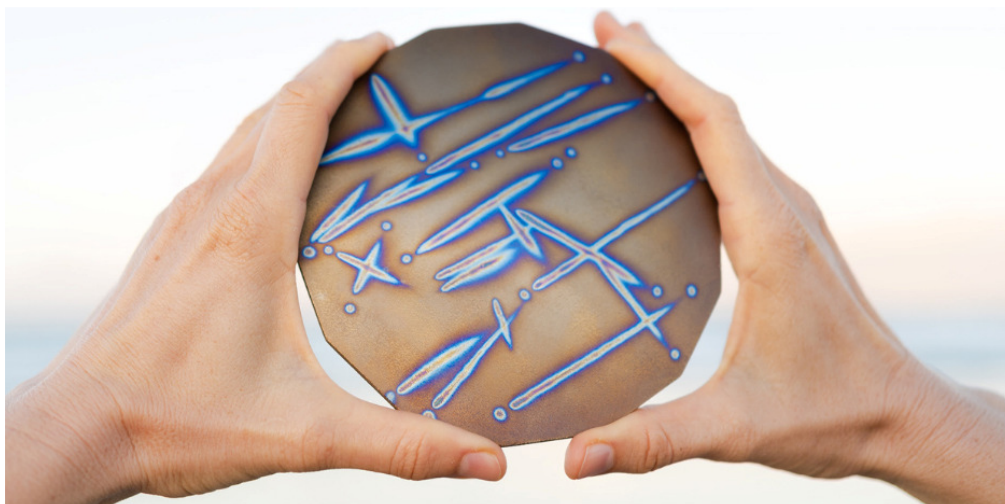
Biological readings on Omega Acubase and Acutec Ryodoraku (electro-dermal stress diagnostic computers), diagnostic Micro-capillary Microscope and Kinesiology tests all show a dramatic change. Many of the biological effects are seen as subtle changes in relationships, emotions and a quieter living environment.

The Electron Stabiliser has unique titanium transceivers installed in a specific configuration within a tamperproof mixture of resin and silica. These receive and transmit photon/tachyon energy in a particular form.

When using with three phase power, you will need two stabilisers. Go to the breaker box/fuse box and find where the power line has been split. You will need to place a stabiliser on the phase one line and a stabiliser on the phase three line. With these lines treated phase two will be covered.

As soon as Nikola Tesla realized that 50-cycles per second Alternating Current was going to be damaging to our bodies, he set out to create free energy that would be harmonious to our body's frequencies. He also wanted humanity to have free access to electricity without having to pay for it. But obviously, the bankers and businesses associated with electricity were not interested in relinquishing this extremely lucrative financial opportunity.

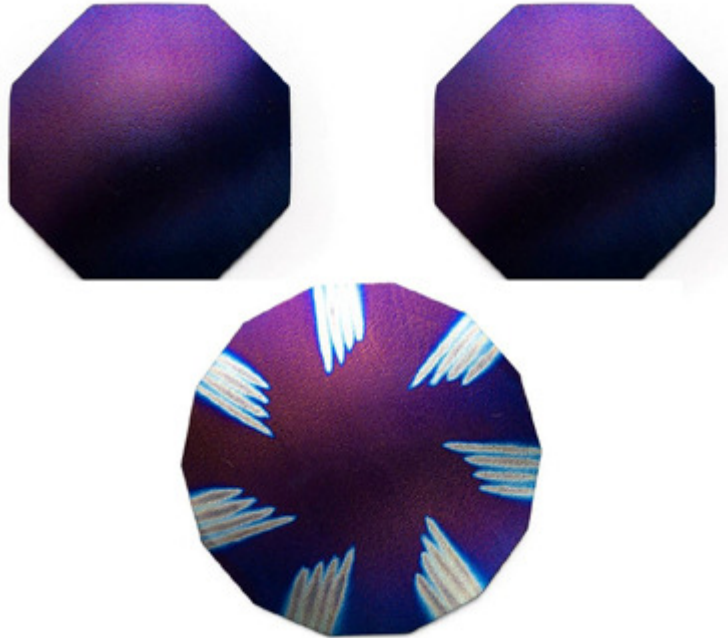
In 1899, Tesla took the media and the bankers to the desert surrounding Colorado Springs. He had built an electronic form of pyramid, working as an energy transceiver. He explained that it put an energy into the surface of the earth which could be withdrawn from the Earth's crust. He then lit two hundred 50w lightbulbs that were screwed into the ground, using his tower, 40km away. Free, clean, harmless energy could have been offered to the world, but sadly his technology was disregarded and later destroyed.



If you have an electric or hybrid car, we have the

## **Electric & Hybrid Car Kit Special**

***Discounted at 10% OFF!***



The Electric/Hybrid Car Kit was specially designed for Electric & Hybrid Vehicles. It consists of a Car Plate and two Small Octagonal Plates. The Car Plate goes in the front of the car similarly to a normal vehicle, and the Small Octagonal Plates are placed concave side down over the battery packs which are usually positioned in the back of the Car.

---



## **The Water Kit**

If, like most people, your water supply is chlorinated, fluoridated, chemicalized “town” water, you will need a **Water Kit** to negatively ionize the water, because the chemicals that they add to water, are positively charged, thusly affecting you negatively.

The Water Kit also removes the memory of the chemicals and puts life-force back into the water, as well as harmonizing any electromagnetic radiation that the water has picked up on its way as it has passed through pipes under high-tension power lines and underground electricity, to your home or from the electricity in your home.



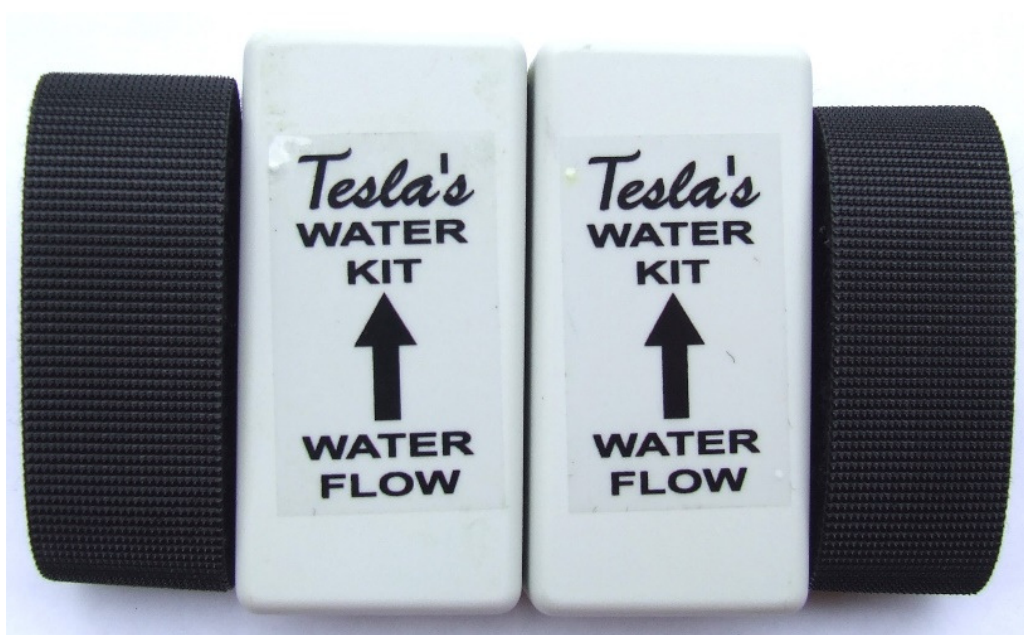
All water (except distilled) contains minerals and salts, making it a perfect carrier of electrical waves and fields, and creates the potential for its own electromagnetic field. Electrical power lines 'leak' electricity during transmission. Some of that electricity penetrates the outer layer of the earth and is attracted to the water in underground streams and water pipes.

In addition, town water supplies contain chlorine and fluoride, plus iron oxide leaching from corroded water pipes allowing charges to form. If water is carrying an electrical charge, the molecules tend to adhere to each other and become inactive (free chlorine), which results in a strong chlorine smell.

Attaching a regular or portable Water Kit, alters the electrical ionisation of the molecules from a majority of positive ions to a majority of negative ions. This creates structured water. The molecules remain separate and reduce the smell and taste of chlorine. Fluoride is similarly affected.

Reduced surface tension causes the water to feel soft. This gives water increased solubility and allows more oxygen to be carried in the water. The body's cells absorb this water much more easily. The water is energised and makes showering and bathing a joy. Plants also seem to grow better/stronger when watered with ionised water.

We have two water kits. The Regular (yellow) Water Kit is attached to the water pipe where the mains water enters your property. The Small Portable Water Kit was developed for the traveller and for those who live in a unit, flat, apartment, or other area where you are unable to fit the Regular Water Kit in a permanent position.



### **Small Portable Water Kit**

#### **The Small Portable Water Kit**

is attached to the kitchen, bathroom, bathtub or shower faucet/tap, using Velcro strips, with the arrow pointing in the direction of the water flow, and you may take it with you when traveling.

***Instead of paying retail for each individual Tesla's product,  
you may create a beautiful Harmonic Bubble for your entire house  
and bless your entire family with a complete***

## **House Kit**

***that contains all the products most families need, priced at a  
15%-20% discount!***



## ***House Kit Specials***

**The 5G House Kit was designed as a complete set  
to take care of all your family's bio-energy needs, including your home, car, phones,  
water and your bodies, at an affordable price.  
Plus, the Tesla's Oyster Plate to harmonize 5G frequencies & radiation.**

We have many combinations of House Kits available to suit every individual family's needs all priced at 15%-20% off retail prices, including:

**Tesla's Essentials Kit** which is a 5G Small Oyster and an Electron Stabiliser is added to the Bare Essentials kit. This widens the scope beyond the personal space and covers much of the home environment needs.

The **Tesla's House Kit** adds an extra set of Phone Tags, additional Pendant, plus a Water Kit and a Car Plate to the Tesla's Essentials Kit. This addresses the water coming into your house, as well as the challenges of your car's electrical fields.

The **Tesla's Apartment Kit** swaps the normal Water Kit for the Portable Water Kit.

The **Business Kit** has a Large 5G Plate, a second Electron Stabiliser and a set of Laptop/Tablet Tags, plus additional Pendants and Phone Tags for two, a Pocket Plate plus a Computer Plate.

- **5G Essentials Kit – Small:** 1x Pendant, 1x set of Phone Tags, 1x Pocket Plate, 1x 5G Small Oyster Plate, 1x Electron Stabiliser
- **5G Essentials Kit – Large:** 1x Pendant, 1x set of Phone Tags, 1x Pocket Plate, 1x 5G Large Oyster Plate, 1x Electron Stabiliser
- **5G Apartment Kit:** 2x Personal Pendants, 2x set of Phone Tags, 1x Pocket Plate, 1x Car Travel Plate, 1x 5G Small Oyster Plate, 1x Electron Stabiliser, 1x Portable Small Water Kit
- **5G Apartment Kit – Single:** 1x Pendant, 1x set of Phone Tags, 1x Pocket Plate, 1x Car Travel Plate, 1x 5G Small Oyster Plate, 1x Electron Stabiliser, 1x Portable Small Water Kit
- **5G Apartment Kit – Couples:** 2x Pendants, 2x set of Phone Tags, 2x Pocket Plates, 2x Car Travel Plates, 1x 5G Small Oyster Plate, 1x Electron Stabiliser, 1x Portable Small Water Kit
- **5G House Kit – Small:** 2x Pendants, 2x set of Phone Tags, 1x Pocket Plate, 1x Car Travel Plate, 1x 5G Small Oyster Plate, 1x Electron Stabiliser, 1x Water Kit
- **5G House Kit - Small – Single:** 1x Pendant, 1x set of Phone Tags, 1x Pocket Plate, 1x Car Travel Plate, 1x 5G Small Oyster Plate, 1x Electron Stabiliser, 1x Water Kit
- **5G House Kit - Small – Couples:** 2x Pendants, 2x set of Phone Tags, 2x Pocket Plates, 2x Car Travel Plates, 1x 5G Small Oyster Plate, 1x Electron Stabiliser, 1x Water Kit
- **5G House Kit – Large:** 2x Pendants, 2x sets of Phone Tags, 1x Pocket Plate, 1x Car Travel Plate, 1x 5G Large Oyster Plate, 1x Electron Stabiliser, 1x Water Kit
- **5G House Kit - Large – Couples:** 2x Pendants, 2x sets of Phone Tags, 2x Pocket Plates, 2x Car Travel Plates, 1x 5G Large Oyster Plate, 1x Electron Stabiliser, 1x Water Kit
- **5G Large Elite House Kit:** 2x Pendants, 2x set of Phone Tags, 1x Pocket Plate, 1x Computer Plate, 1x Car Travel Plate, 1x 5G Large Oyster Plate, 1x Electron Stabiliser, 1x Water Kit
- **5G Elite Business Kit:** 2x Pendants, 2x set of Phone Tags, 1x Laptop/Tablet Tag Set, 1x Computer Plate, 1x Pocket Plate, 1x Car Travel Plate, 1x 5G Large Oyster Plate, 2x Electron Stabilisers, 1x Water Kit



**!!!! NEW !!!!**

**HARMONIZE YOUR HOME WITH THE  
TESLA'S 5G HOUSE  
KIT FOR COUPLES**

- ✓ 5G Oyster
- ✓ Electron Stabiliser
- ✓ Water Kit
- ✓ 2 x Car Travel Plates
- ✓ 2 x Pocket Plates
- ✓ 2 x Personal Pendants
- ✓ 2 x Sets of Phone Tags



## ***The Spiritual Practitioner Range***

Tesla's also carries an amazing range of more Spiritually oriented Plates, to help you maintain a blissfully healthy, happy & harmonic life.



### ***Practitioner Plates***

For health practitioners, we have the **Small Practitioner Plates**, which put health practitioners in a beautiful harmonic space and alleviate any stress from other people's psychic energies.

We also have a **Large Practitioner Plate** that you can place under your massage table, or under where your clients sit, which puts your clients in a lovely harmonic blissful space, which makes your job a lot easier.

The Practitioner Range was developed to assist those who work with bio-energetic fields, subtle bodies, and self-development. Whilst developed for energy workers, anyone who is attuned to the subtle energies of our existence will love having these beautiful and vital plates in their lives.

The oval shaped Practitioner Plate dates to the Egyptian era and is seen in the hieroglyphics and drawings on pyramid walls with the oval shape being worn over the third eye.



## *The Chakra Balancer*



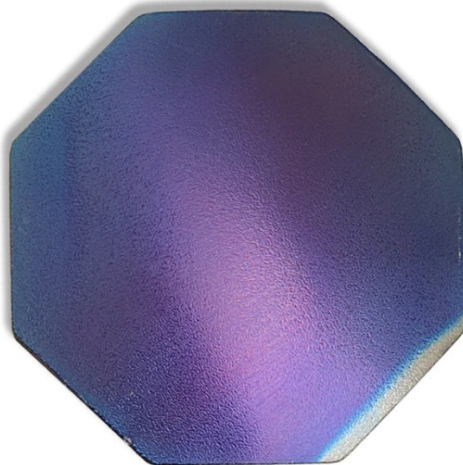
The Chakra Balancer does what its name suggests, you can use it to balance your chakras and the chakras of your clients.

The design of the Chakra Balancer appeared quite mysteriously when the water laser computer cut a single hole in each Small Octagonal Plate, just big enough to tie a string on it. Which then became known as the Chakra Balancer, which some have described as feeling calm, yet firm and strong.

The Chakra Balancer is also helpful to “Push through” physical blockages, and as a blood cleanser, similar to the effect of taking antibiotics.

---

## *The Amplifier*



The Amplifier is an octagonal, oyster-style, double plate.

As part of the Practitioner range, the Amplifier is designed to amplify energy work and “healing”. The Amplifier takes on your individual matrix within a couple of hours, so is therefore unusable by other people.

It is designed to be carried on your person or placed on the silk it came with and positioned on your desk while working.

The Amplifier will assist you with your clients by amplifying your connectedness. It is great for meditation and to amplify your office/business work and other projects.

It is also excellent to amplify the energetic effects of other plates, such as the Chakra Balancer.

There are specific detailed instructions for the optimal use of this plate.

It is designed for serious energy workers and experienced Tesla's Practitioners only.

When purchased separately, the Amplifier is available in blue with a white stripe only.

Patterned Amplifiers are available only as part of the Lightworkers Kit.

Our titanium-based products are hand decorated by our artists, and as such, no two are the same. Some of the colours are extremely difficult to produce and ALL will have variations.

---

## *The Spirit Plate*



Many people are experiencing overwhelm due to the incredible rate of change, both energetic and technological, in our world today. The Spirit Plate is configured to help people cope with the spiritual and emotional turmoil that accompanies these feelings of overwhelm.

The Spirit Plate may help to move energy patterns that need to be released; assist you to clear thought patterns whilst creating; aid in assessing a situation more clearly; or support connection at a spiritual level.

This artefact is a double oyster-style, oval plate with slight doming. Like the Personal Pendant, the Spirit Plate adapts to each person's matrix, so once the plate has imprinted to an individual it cannot be given away to another. It may, however, be used by others to help them through their spiritual and emotional shifts in the presence of the owner. The energy of the Spirit Plate affects the spin rate of every cell in the body.

Using the Spirit Plate often results in a feeling of calmness, which is what happens when the spirit and the physical body are in alignment.

The Spirit Plate comes in two sizes – large and small. The Large Spirit Plate is for adults. The Small Spirit Plate is suitable for teenagers, younger children and pets.

**For Practitioners:** The Spirit Plate works beautifully in combination with the Chakra Balancer to open the correct spin of the Chakras and balance the physical and spiritual, resulting in a well-balanced person.



Directions on optimal usage of the Spirit Plates is supplied when purchased. There is also information available in the free Tesla's Consultant Training.

---

## ***The Carry Me Plate***



The Carry Me Plate is a ten-sided, oyster-style, double plate.

This plate will bond with your matrix in only 15 to 30 minutes. It works well with other Tesla's Plates, especially the Chakra Balancer, Amplifier or Car Plate.

The Carry Me Plate is an adaptogen and will work on whichever aspect of the body/mind matrix you need it to. It works alone or with other plates to keep your energy field clean. For daily use, keep it on your person, tucked into a bra or in your pocket.

The Carry Me Plate comes in Blue, Gold, Merge or Silver.  
Directions on optimal usage of the Carry Me Plate is supplied with purchase.

---

## ***The Awakener***



The Awakener is an oval plate with a hole in the middle. A large amount of energy flows through this centre aperture and it is excellent for activating the energy of the third eye, or to calm and focus your mind during meditation. It is also helpful to assist with improving vision and soothe tired eyes. You may also purchase two Awakeners for both eyes.

Directions on optimal usage of the Awakener is supplied with purchase.

---

## *The HearTen Soul Plate*



The HearTen Soul is a small, personal, oyster-style, double-plate pendant. Like the Personal Pendant, it binds with your matrix and becomes part of you within an hour of wearing it.

It was created to be worn over the body's Assemblage Point. This is the epicentre of the human energy field and has a direct influence over the biological activity of all organs. The Assemblage Point connects our heart and soul and regulates how we feel and behave.

Unlike the Personal Pendant, the HearTen Soul should NOT be placed in water, nor worn in the shower, bath or while swimming, as doing so may cause the HearTen Soul to come apart. The HearTen Soul Plate comes in Blue, Gold, Merge or Silver. Directions on optimal usage of the HearTen Soul Plate is supplied with purchase.





## **The Lightworker's Kit**

**15% Discount!**

***1 Chakra Balancer, 1 Large Practitioner Plate, 1 Eye Awakener Plate & 1 Amplifier***

The Lightworker's Kit was developed to assist those who work with bio-energetic fields, subtle bodies, and self-development, such as massage therapists, chiropractors, kinesiologists etc.

It is designed to assist you to conduct very powerful light energy work.

You will feel energetically supported as you immerse yourself in your light-work.

These plates work synergistically to enhance and strengthen your energy fields, frequency, and vibration. They are designed for many different tasks.

The plates can be applied to both the client and the practitioner during sessions and can be used in person or from a distance.

Many different therapists and energy workers have reported these plates to be very beneficial to their professional practice. Psychologists have found that calmer, less stressful sessions were experienced when a Large Practitioner Plate was placed under their clients' chair.

Use of these practitioner plates is not limited to professionals. Anyone who is attuned to the subtle energies of our existence will love having these beautiful and vital plates in their lives.

Each Lightworker's Kit is designed as a matched set.



## ***The Lightworker's Kit is comprised of:***

**The Chakra Balancer** is designed to open & balance your clients, or your chakras. It is also beneficial for blood cleansing, similar to the effect of taking antibiotics.

**The Large Practitioner Plate** is designed for Healers & their clients, to strengthen and harmonize the healing practitioner's energy field, and help clients to enter a higher brain-wave state, making the Practitioner's work more effective and accelerated.

**The Eye Awakener** is designed to open your third eye, help you achieve a state of calmness & focus & assist in the improvement of your vision.

**The Amplifier** was developed to amplify your spiritual and energy work.

It is great for meditation and to amplify your office/business work and other projects. It is also excellent to amplify the energetic effects of other plates, such as the Chakra Balancer.

There are specific detailed instructions for the optimal use of this plate.

It is designed for serious energy workers and experienced Tesla's Practitioners only.

---

## ***The Next Gen Range***

As well as individual pieces for specialised purposes, the Next Gen Range are system devices using various families of Tesla's Innovational Technologies products. They have been developed to use their differing capabilities in synergistic combination to provide an even greater benefit for spiritual, emotional, and energetic growth.

The Tesla's Next Gen range was developed by Christopher Lewin after years of research and experience with energetic fields and wholistic health. Each device will enhance your spiritual and emotional wellbeing in different ways.

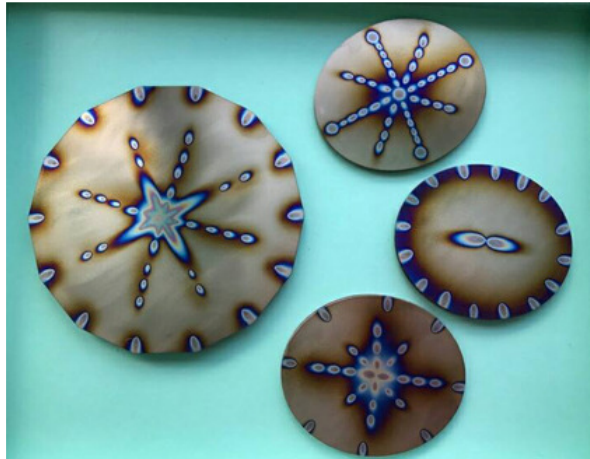
The **Transcender Range** all use a 5G Oyster Plate as the central focus, plus a specific arrangement of Spirit Plates.

Normally Spirit Plates bind themselves to a specific user, but when created as a family the Spirit Plates bind themselves to their Oyster Plate and become a unit. As such, the plates need to stay together and be used together.

Customers have reported that each of the **Transcender & Heart-Sender** systems create a vortex of energy that travels up through a person's center.

Each system differs in its usage and outcomes. Each of these devices enhances a person's spiritual and emotional wellbeing in different ways using energetic fields and wholistic health principles.

## **Adult Transcender Kit**

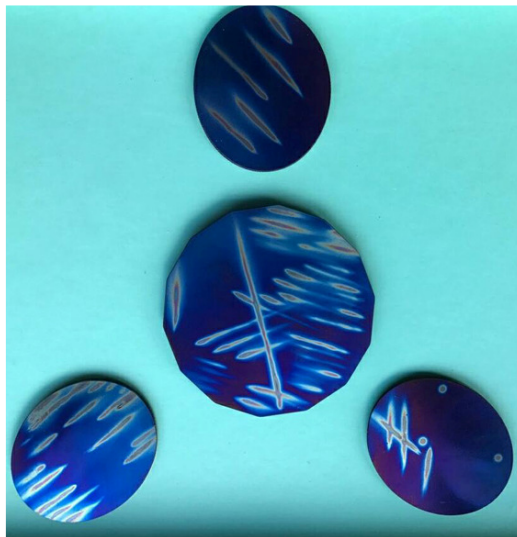


The Tesla's Transcender Kit is the perfect answer for people who want to create a balanced state of consciousness, clear the mind, tap into the Cosmic Universe, and achieve higher states of consciousness.

The Adult Transcender consists of one 5G Large Oyster and three Large Spirit Plates on a triangular canvas base. Its main purpose is to balance the energy of your emotions and reconnect you with your mind, and your greater purpose in life.

It can be used to assist in emotional pattern release and enhance DNA, increasing the life force. Many people experience a deep sense of peace while using the Transcender and afterwards.

## **Junior Transcender Kit**



The Tesla's Junior Transcender is the perfect answer for people who are extremely sensitive, including young people and children. And helps them achieve higher states of consciousness and tap into the Cosmic Universe. It can also be used to increase the life force of food.

The vortex energy that is felt with the Junior Transcender is a little lighter than the Adult Transcender and helps to achieve a balanced state and a clearing of the mind. It was developed to work with the inner child and to help release energy from past traumas. It often recalls joyful times in your early life. Energy releases in the spine have also been reported.

The Junior Transcender is comprised of a 5G Small Oyster Plate plus three Small Spirit Plates on a triangular canvas base.

## *The HeartSender Kit*



The HeartSender has one 5G Small Oyster Plate plus six Small Spirit Plates and base, in a star configuration. With seven plates working as one, there is a strong field created that can balance the energies in all the ten bio-energetic levels of the person. The HeartSender is designed to help you get out of your head & feel with your heart.

The HeartSender works to create a coherent alignment of Heart and Mind, opening the pathways of the brain to the heart and back again. It helps you to experience a deep connection with your inner self. It may have an effect at a cellular level. Users have reported increased composure, more energy, clearer thinking, and an enhanced immune system.

Meditation is greatly facilitated with the use of this system. Energy practitioners placing the HeartSender under their massage tables have reported increased energetic effects.

The Tesla's HeartSender was inspired by Master Tesla's Practitioner Christopher Lewin when he was experimenting with the Transcenders, where he placed the small Transcender over the large one, to create a six-sided effect like the Starhenge pattern. His daughter then had an amazing experience and felt like a totally different person after laying above them on a massage table.

Christopher then worked out the measurements and had the Heartsender made at the Tesla's factory. After testing it with numerous people, they decided to call it the "HeartSender", as it helped people to get out of their head and feel with their hearts.

When experiencing the effects of the HeartSender, people have often been inspired to rock back and forth as the vortex energy goes through them and reconnects them with their heart. Other benefits are increased composure, more energy, clear thinking, and an enhanced immune system. It has also proven to be a handy counselling tool, as the HeartSender helps people open up and share what is really bothering them and let go of things that no longer serve them.

The Tesla's HeartSender is like a mini version of the Tesla's Light Chamber. It is very good for supporting Heart Brain connection. This little device is truly amazing. It is 'Gentle and yet forceful'. Once you have heart-mind coherence, the level of connectedness to yourself and others is amazing. From a physics perspective, when we are in a coherent state, virtually no energy is wasted because there is synchronisation between the heart and mind. One of the simplest and quickest paths to personal heart coherence is through the Tesla's HeartSender.

It comes with a woollen carpet base that is easy to transport, designed for medium foot traffic.





**The Starhenge**

### **Special Notes:**

All single-sided pendants and plates are fine in water. You may leave your pendant on 24/7, and go swimming with it on, etc. The waxed string does not absorb water. But, all double-sided oyster plates, **MUST NOT BE PUT INTO WATER** because the glue holding them together may disintegrate.

**DO NOT** place any plates directly on metal as the energy from the plate will become short-circuited.

When traveling with many Tesla's plates, always place them dome to concave all facing the same way. By doing this, they will go to sleep and not overwhelm you.

---

### **30-day Money Back Guarantee**

As you have seen above, we have countless research papers and scientific tests, as well as Aura & Kirlian photos that prove the effectiveness of these amazing harmonizing technologies. And below, you can read the countless testimonials I have received from very satisfied customers from around the world, including one of the major hot spots of radiation, Japan!

But our 30-day money back guarantee removes any final doubts! And aside from Pendants, Amplifiers, Carry Me Plates and Spirit Plates, (that adapt to your specific vibration and are therefore unusable to anyone else), all other Tesla's Products have a 30-day money back guarantee, that if you are not totally satisfied, you may return your products for a full refund!

And Tesla's Products do not ever wear out or lose their harmonic frequencies!!!! Unlike many other products that lose their effectiveness over months or years.

---

So, I hope you have enjoyed this book, and I hope you will bless yourself and your family with these amazing Tesla's Harmonizing Technologies!

Infinite Blessings on your Harmonic Journey!

ZaKaiRan

*To purchase Tesla's Harmonizing Products,  
please go to my website at:*

**[TeslaProducts.com](https://TeslaProducts.com)**

---

***Would you like to become  
a Certified Tesla's Technologies Consultant  
FREE of charge?***

***Including  
FREE Training***

**on how to help other people create amazing stress-free harmonic homes, by showing them how to harmonize the harmful effects of Electromagnetic Frequencies & Radiation!**

***You will then be granted an official license  
to purchase Tesla's Harmonizing Products at a***

***20% discount!***

***To re-sell these amazing products online, at your shop,  
healing center, markets, seminars, etc.***

**[Go here for more information!](#)**

# ***Are you Concerned about the Negative Effects of 5G and EM Radiation?***

***We Have the Solution!***

***[TeslaProducts.com](https://TeslaProducts.com)***



***Are you ready to transform your home or business into a sanctuary of peace, vitality and prosperity?***

***Introducing Tesla's Harmonizing Products,  
where we bring you the future of energy harmonization!***

***At***

***[TeslaProducts.com](https://TeslaProducts.com)***

***we offer a revolutionary solution to help you thrive in the modern age of energetically damaging frequencies.***

***Elevate Your Environment with Harmonic Energy!***

***Visit [TeslaProducts.com](https://TeslaProducts.com) Today!***

***Discover Tesla's Products & Say Farewell to EMF Worries!***

***In a world filled with electromagnetic frequencies and radiation from 5G, mobile phones, WiFi, electricity, and computers, it's natural to be concerned about the impact on your well-being.***

***Our cutting-edge technology empowers you to live a life no longer negatively impacted by electromagnetic frequencies.***

***No more anxiety about harmful radiation!***

***Say goodbye to stress & anxiety about modern technology, and say hello to a life filled with ease, calmness, and vitality.***



## ***Experience a Harmonious Haven!***

***Tesla's Harmonizing Products are engineered with precision and specially crafted to balance and harmonize electromagnetic frequencies and radiation in your living and working environments, creating a biologically harmonic environment.***

## ***Versatile Technology***

***The Tesla's Harmonizing Plates,  
the heart of "Tesla's Innovational Technologies", are incredibly versatile.***

***These powerful plates are not limited to harmonizing the negative effects of electromagnetic frequencies and radiation; they can also revitalize the plant and animal life surrounding your home or farm.***

***Imagine a thriving garden and happy, energetic pets, all thanks to Tesla's Plates!***

## ***Elevate Your Space with Tesla's Harmonizing Products!***

***Whether you're a homeowner or a business owner,  
Tesla's Harmonizing Products are the perfect addition to your space.  
Embrace a future where technology and well-being coexist harmoniously.***

## ***Experience the legacy of the visionary scientist Nikola Tesla***

***The cutting-edge technology behind these harmonizing products,  
was created by the great genius himself, Nikola Tesla,  
when he realized that 50Hz AC electricity would be damaging to our bodies.***

***And the titanium plates, have been energized with energy fields that create a  
powerful harmonic environment, effectively nullifying the negative effects of  
electromagnetic frequencies and radiation.***

## ***Discover the Artistry of Tesla's Plates***

At

**[TeslaProducts.com](https://teslaproducts.com)**

***we take pride in crafting each individual Tesla's Plate to be a true work of art!***

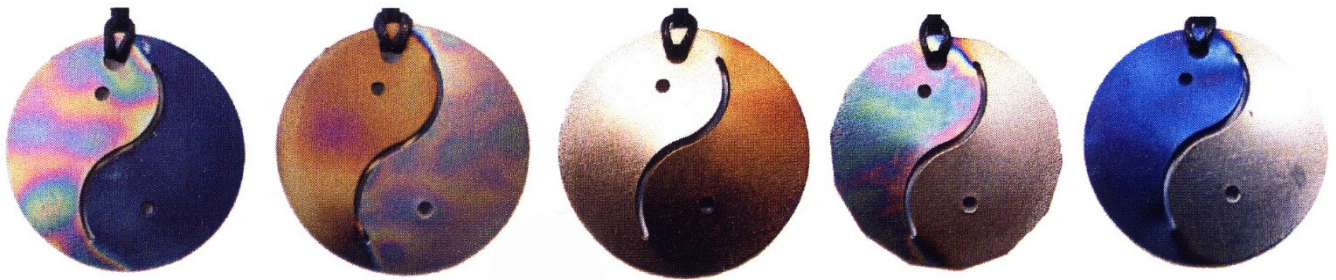


*Tesla's Harmonizing Products has countless unique designs available,  
and customizable designs are available.*

*Every single Tesla's Plate is meticulously and lovingly colored by our amazing  
artisans, so no two plates are alike!*

*And uniqueness and individuality shines through in every plate.*

*You may choose from an array of designs, colors, sizes and shapes,  
to find the perfect Tesla's Plate that complements your space and energy,  
which means you're not just selecting an energy harmonizing tool –  
you're acquiring a unique artistic masterpiece,  
making each plate a one-of-a-kind addition to your wardrobe and space.*



*[Start Your Journey to Harmony](#)*

**Which Tesla's Harmonizing products should I start out with?**

*We recommend beginning with a*

*[Personal Pendant](#), a set of [2 Phone Harmonizing Tags](#),*

*a [Pocket Plate](#), [Computer Plate](#), or [Laptop/Tablet Tags](#).*

*And then move on to the [Water Kit](#), to harmonize the water coming into your  
home.*

*Then the larger plates, such as the [5G Small Oyster Plate](#),  
to harmonize radiation coming to your home.*

*Then the  
[Electron Stabilizer](#)  
to harmonize the electricity & appliances in your home.*

*Or go straight to the [House Kit Specials](#) that are priced at 15%-20% off,  
to take care of all your family's bio-energy needs.*

## **House Kit Specials – 15%-20% discount**

*The 5G House Kit was designed as a complete set to take care of all your family's bio-energy needs, including your home, car, phones, water and your bodies, at an affordable price.*

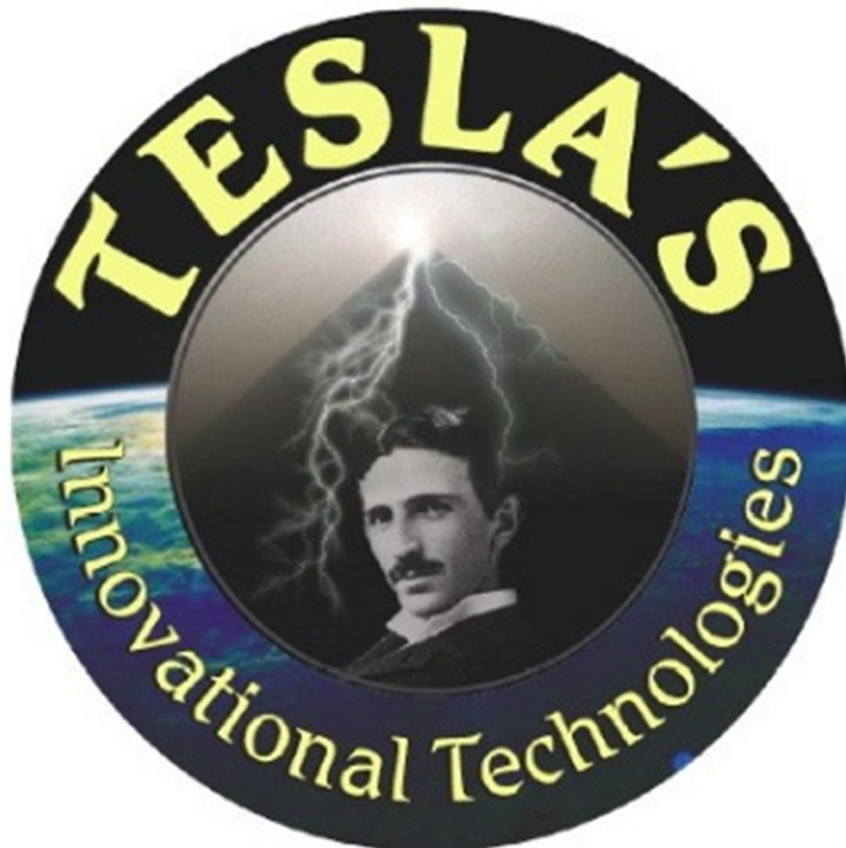
### **Benefits:**

- \* Reduce stress and anxiety*
- \* Promote a sense of ease and calm*
- \* Enhance overall well-being*
- \* Energize and rejuvenate your surroundings*
- \* Improve plant and animal life in your area*

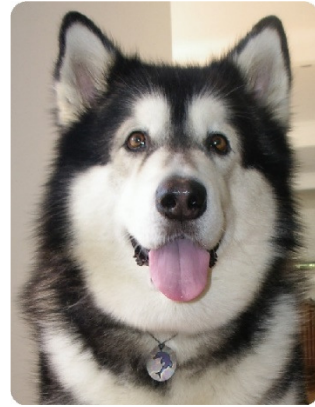
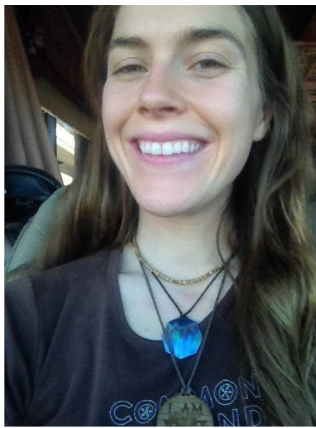
*Transform your life with the power of Tesla's Harmonizing Products!*

**Visit [TeslaProducts.com](https://TeslaProducts.com) today  
to discover a world of Energy Harmony!**

**Embrace the future, embrace well-being,  
and unlock the secrets of a harmonious life  
with Tesla's Harmonizing Products!**







## ***Testimonials from Satisfied Tesla's Customers***

Hi, my name is Princess. And I am what you humans call a dog. I'm very happy that my "Master" got me my Furry Friends Pendant! It makes me feel very happy, content and fully of energy. I can chase a ball all day and not get tired anymore. And I'm a lot more mellow now too. I don't bark as much anymore or chase the mail man. And I no longer want to tear the throat out of my next-door neighbor 'Bruiser', who's a real dick head. If I had any money, I would buy him a pendant. But unfortunately, no one will pay me money to do anything. Even when I roll over and play dead, they just give me a treat. Screw that, I want money!

---

Hi, my name is Siara. I'm 1 year old, so I can't talk or write yet. So, I'm sending this as a psychic message to ZaKaiRan to translate. Since my mommy got me a Tesla's Pendant, I sleep like a baby! And I am always full of energy. In fact, I'm so full of energy, I keep my parents up all night, because all I want to do is play! Which they don't like very much. So, they will often take my pendant off while I sleep so that I can catch some Zzzzs. Thanks ZaKaiRan! You're a total legend and the Tesla's Products are out of this world! Goo Goo Gaa Gaa!

---

Since both my teenage sons have been wearing the energy harmonizer pendants for a month now, I thought I should let you know that my younger son Jase, who suffered almost daily headaches from EMF sensitivity, has not had one headache since! My oldest son had frequent rhinitis which has also virtually ceased and they're both falling asleep more easily. We're all very happy with the effectiveness of the beautiful pendants, thanks very much. Please keep me posted on your Quantum Healing training, I'd love to attend one of your sessions.

With best wishes - Jeannie :)

---

Hi ...my EMF device for my computer is working fantastically.  
Regards, Dianna

---

Hello ZaKaiRan, I just wanted to tell you that I have one of the pendants from you and I have been wearing it for a long time. It has helped me a lot. Thank you so much. Alejandro

...thanks for entrusting me with the plate it proved to be sooo supportive of me at work, my life has changed thankyou thankyou - Azriela

---

"I think I'm gonna order the practitioners plates....as your pendants work so well.

...Anyway, I just ordered two practitioner's plates, one for \_\_\_\_\_ and one for myself. After trying many products, I have found that yours are without a doubt the most effective.....(Energy born of light and love always are!) On another subject- I am reading your mini ascension guide and getting goose bumps. Here was something right in front of me that probably I wasn't ready for, until now. THANK YOU! E

---

Dear blessed light being ZaKaiRan, Thank you! ...my daughter really needs hers... ...Interesting, when she doesn't wear her necklace, (she's 14) she is extremely affected by EMR fields. Her adrenals get stressed out to the point where you think she has a cold... but since "I" know what a cold really is...and she could eat alkaline foods like avocados all day long, if it is her system being too acidic, that would work right away. When it's the fact that she hasn't worn her necklace, the symptoms are the same, but caused by EMF's. Divine Reiki energy is currently supporting her bubble of protection.

Love, Light and Absolute Abundance to YOU! Elizabeth Thode

---

Hello ZaKaiRan, since both my teenage sons have been wearing the energy harmonizer pendants for a month now, I thought I should let you know that my younger son Jase, who suffered almost daily headaches from EMF sensitivity, has not had one headache since! My oldest son had frequent rhinitis which has also virtually ceased and they're both falling asleep more easily. We're all very happy with the effectiveness of the beautiful pendants, thanks very much.

With best wishes, Jeannie :)

---

Hello ZaKaiRan, I firstly want to thank you for my boys' tachyon surfboards, which you selected perfectly to suit them both - they are thrilled with them! Your incredibly speedy service is much appreciated, as is the inclusion of the beautiful feathers; you are so kind. Thank you for sharing your uplifting energy with us :) Best wishes, Jeannie

---

hi, ZaKaiRan, we received your goodies. thank you very much. my partner loves the colour of pendant! I already feel a difference using a computer with your product. warm regards, Yuki

---

ZaKaiRan, I have dealt with many people and products over the internet, but your reply is by far the wisest and most helpful I have ever received!! It is evident you are a man of Wisdom! I'd like to thank you for caring and for taking the time to reply to me so thoroughly. I know how precious time is in this 3D world! You have given me greater confidence in your products.

I love that you said it radiates with the Light of the Central Sun, because I just came to intuitively know that the PEP's radiated light of another kind... Again, thank you for your kind and masterful reply!! Much Love and Blessings to you! Johannes.

---

Dear ZaKaiRan, just wanted to let you know I wear my pendant all the time! Plus with the farm oyster plate and the large house plate both placed in the small apartment we rented in the city, seems like we are not being effected by Wi-Fi and smart meter.... seems like these products really work! i plan on purchasing more goodies from you! cheers, Lynda

---

Beloved ZaKaiRan, I just opened my parcel from you containing the Personal Pendant and Seed of Life Earrings. I gasped when I saw the Pendant. I asked you to tune in to one for me and it is incredibly beautiful and contains all the colours that I am especially attuned to. So, your

attunement is amazing. The earrings are also perfect for me. I feel so uplifted just by receiving them into my vibration. Gracious gratitude - you are so inspiring, loving and caring! In Divine Friendship..... Prema

---

Got the pendant and wearing it for the first 24 hours now! I love it, thank you so much! So that I'm clear, the concave side (the side that goes inward) should be facing the body, correct? Thank you again so much! Regards, Agragati

---

Hiya! ...And the pendant, oh my goodness! What a beautiful piece of wearable art!! My sister was so happy with it... Thank you!! Thank you for being you and doing what you're doing! \*warm hugs\* "Thanks Zakairan, am loving my Tesla pendant you sent me. Great for my daughter too :)" Natasha

---

Hello ZaKaiRan

I just wanted to tell you that I have one of the pendants from you and I have been wearing it for a long time. It has helped me a lot. Thank you so much. It is a joy to see you on this site.

Alejandro Gonzalez Guzmán

---

...thank you very much, ...The car plate is just great, have noticed, even in heavy traffic, that I don't get so bothered. I bring it inside and put it on top of the computer screen, Saturday last I was on the net from around 1.30pm to 3.00am, didn't realise it was past dinner time till around 9.30pm, relaxed, got so much done, no eye strain, headaches, backaches. Then I place it under my bed, and I sleep straight through to alarm time, usually I awaken every 2 to 3 hours. I have already started to tell my friends, so those with a brain will probably place some orders, who knows, but I do. Thanks again. When I get a job and a bit of cash flow, I will be looking at some of the other products. Blessed be, Ted.

hi Zakairan,

I love the energy of it - makes my heart sing..... such a small thing has a real nice frequency. I wear a "rejuvenator" by Phyllis light around my neck for the last 4 years. I don't really feel the energy anymore but when I forget to put it on for a few days I sure notice that its gone.... quickly finding it again. Would love to try some more tesla stuff - just not the time financially.

xo Saraela

---

Greetings Zakairan, I have some more news about the effects of the Tesla House plate I bought of You! Recently a friend was in a bad car accident, she had multiple injuries, the worst was all ribs broken down one side and an almost amputated foot, and I have been going to see her twice a week, about 4 weeks ago I was inspired/guided to take my Tesla Plate with me, I know its not meant to be used in a big multi-storey Hospital, she is on the 7th floor, but I took it anyway, her condition was not good, she had a bad infection that was making one wound very hard to heal, in fact they had to cut out a grapefruit sized infected piece of skin and muscle, down to the bone on her leg/ankle, to stop the infection that was Anti-Biotic resistant, but still things were not looking good, and there was talk of amputation!

But in the last 4 weeks of my visits with the Tesla Plate, I put it under her wound to start, and then under her bed, not only has her condition improved quite dramatically, there is no more talk of amputation, and her muscles are growing back quicker than expected!, so much so they are now going to do a skin graft and maybe let her go home in a few weeks! She was skeptical when I first used it and looked at me oddly, but even she has had to say she thinks it has helped!

Blessings Mark Sitting Bear Amara



The longer I am in its energies, the better I feel, i feel less chaotic and more focused and balanced, and I may feel more the longer I am within its energies. I have also been letting food and drink stand on it, for a little while, maybe I am asking this plate to do a lot for me, but it can't hurt putting food and drink on it. And my mental, emotional and physical bodies are now all happy I have the Tesla Plate! May the New Year bring us all good surprises, that come in unexpected ways!

Blessings, Mark Amara Sitting Bear

---

I recently bought 2 surfboard and 1 dolphin harmonizers. One of the surfboard harmonizers was for one of my dogs. He was doing very well with the harmonizer on. He is a very hyper dog and with the harmonizer he didn't bark as much, and he stopped going to the bathroom in the house. It is amazing at the difference the pendant has made for my dog. We were having some trouble keeping the harmonizer on him.

We just recently found out that my son can talk to the animals here at the farm and the dog does feel better with the harmonizer on, so it is important to us that we get him the right one. (my son and daughter wear the other ones I bought, and they enjoy them as well). Thanks so much for all your help. Love this product. Thank you again for all your information and help. My family thanks you also. Blessings Tricia Lindner

---

Greetings and salutations! I bought one of your pendants at the time and have worn it ever since. It's been fantastic and I've had a noticeable difference in my fields!!! Thankyou! Love and light to you all! Natalya

---

Greetings and Salutations again ZaKaiRan!! You should have seen the look on two of my friend's faces when I gave them the pendants!!! It was awesome. They're both struggling a little right now too, so a boost of EMF light energy is perfect. My mother, brother, his girlfriend and her brother all send thanks by the way for making these awesome tools available!! (they are the BEST gifts!!). I've got my mum considering a farm plate, I think! I showed her your website after giving her and my brother theirs, and even though we're in suburbia(ish), what's the harm in sending out clear energy to help the neighbours?! And of course our beautiful planet.. Thank you for being a part of my shifting, the tesla plates feel soooo yummy!! Love and light to you fellow lightworker! Natalya

Greetings and salutations! I bought one of your pendants at the time and have worn it ever since. It's been fantastic and I've had a noticeable difference in my fields!!! Thankyou! Love and light to you all! Natalya

---

A story that was told to me from a friend, is she was out in nature and meditating. Before she knew it, she was surrounded by Water Dragons, (lizards). And then one of them walked right up her lap and crawled up her chest and grabbed her tesla pendant in its mouth, through her shirt, (it was under her shirt and could not be seen). And she reckoned that all the dragons were drawn to her because of the tesla pendant. Totally cool!

Hello, thank you very much for all of your time and concern. I love my pendent and I am so impressed with what I have learned about Tesla's Innovational Technologies so far. I will certainly look into some of your other products and support your business again in the future. Take care, Neil Brewer (Canadian Customer)

---

Hi ZaKaiRan, Big HI FIVE to you! Thankyou! Thankyou! Thankyou! With the house plate I noticed a big difference immediately; the effect is something similar to that of radionics. Love and Blessings, Silvija

---

A story that was told to me from a friend, is she was out in nature and meditating. Before she knew it, she was surrounded by Water Dragons, (lizards). And then one of them walked right up her lap and crawled up her chest and grabbed her tesla pendant in its mouth, through her shirt, (it was under her shirt and could not be seen). And she reckoned that all the dragons were drawn to her because of the tesla pendant. Totally cool!

***To purchase Tesla's Harmonizing Products,  
please go to my website at:***

**[TeslaProducts.com](http://TeslaProducts.com)**

